

Product datasheet for **AP52800PU-N**

Myogenin (MYOG) (Center) Rabbit Polyclonal Antibody

Product data:

Product Type:	Primary Antibodies
Applications:	WB
Recommended Dilution:	Western blot: 1/1000. Enzyme immunoassay: 1/1000.
Reactivity:	Human
Host:	Rabbit
Isotype:	Ig
Clonality:	Polyclonal
Immunogen:	Synthetic peptide - KLH conjugated - corresponding to the central region (between 122-150aa) of Human Myogenin.
Specificity:	This antibody recognizes Myogenin.
Formulation:	PBS State: Aff - Purified State: Liquid purified Ig fraction Preservative: 0.09% (W/V) Sodium Azide
Concentration:	lot specific
Purification:	Purified through a Protein A column followed by peptide affinity purification
Conjugation:	Unconjugated
Storage:	Store undiluted at 2-8°C for one month or (in aliquots) at -20°C for longer. Avoid repeated freezing and thawing.
Stability:	Shelf life: one year from despatch.
Predicted Protein Size:	25037 Da
Gene Name:	myogenin (myogenic factor 4)
Database Link:	Entrez Gene 4656 Human P15173



[View online »](#)

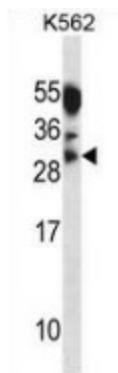
Background: Myogenin is a muscle-specific transcription factor that can induce myogenesis in a variety of cell types in tissue culture. It is a member of a large family of proteins related by sequence homology, the helix-loop-helix (HLH) proteins. It is essential for the development of functional skeletal muscle

Synonyms: MYOG, MYF4, Myogenic factor 4, BHLHC3

Note:

Protein Families: Druggable Genome, Transcription Factors

Product images:



Western blot analysis in K562 cell line lysates (35ug/lane) using Myogenin antibody. This demonstrates this antibody detected the Myogenin protein (arrow).