

## Product datasheet for **AP52795PU-N**

### **MYO1E (N-term) Rabbit Polyclonal Antibody**

#### **Product data:**

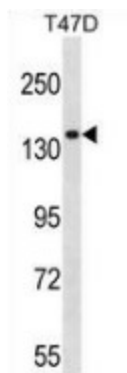
Product Type:	Primary Antibodies
Applications:	WB
Recommended Dilution:	<b>Western blot:</b> 1/100-1/500. Enzyme immunoassay: 1/1000.
Reactivity:	Human
Host:	Rabbit
Isotype:	Ig
Clonality:	Polyclonal
Immunogen:	Synthetic peptide - KLH conjugated - corresponding to the N-terminal region (between 227-257aa) of human Myosin-Ie
Specificity:	This antibody recognizes human Myosin-Ie at N-term.
Formulation:	PBS with 0.09% (W/V) Sodium azide State: Aff - Purified State: Liquid purified Ig fraction
Concentration:	lot specific
Purification:	Purified through a Protein A column followed by peptide affinity purification
Conjugation:	Unconjugated
Storage:	Store undiluted at 2-8°C for one month or (in aliquots) at -20°C for longer. Avoid repeated freezing and thawing.
Stability:	Shelf life: one year from despatch.
Gene Name:	myosin IE
Database Link:	<a href="#">Entrez Gene 4643 Human Q12965</a>
Background:	Myosins are actin-based motor molecules with ATPase activity. Unconventional myosins serve in intracellular movements. Their highly divergent tails are presumed to bind to membranous compartments, which would be moved relative to actin filaments (By similarity).
Synonyms:	MYO1E, MYO1C



[View online »](#)

Note: **Molecular Weight:** 127062 Da

**Product images:**



Western blot analysis in T47D cell line lysates (35ug/lane) using Myosin-Ie antibody. (N-term). This demonstrates this antibody detected the Myosin-Ie protein (arrow).