

Product datasheet for **AP52791PU-N**

MYL9 (C-term) Rabbit Polyclonal Antibody

Product data:

Product Type:	Primary Antibodies
Applications:	WB
Recommended Dilution:	Western blot: 1/100-1/500. Enzyme immunoassay: 1/1000.
Reactivity:	Human
Host:	Rabbit
Isotype:	Ig
Clonality:	Polyclonal
Immunogen:	Synthetic peptide - KLH conjugated - corresponding to the C-terminal region (between 95-125aa) of human MYL9
Specificity:	This antibody recognizes human MYL9 at C-term.
Formulation:	PBS with 0.09% (W/V) Sodium azide State: Aff - Purified State: Liquid purified Ig fraction
Concentration:	lot specific
Purification:	Purified through a Protein A column followed by peptide affinity purification
Conjugation:	Unconjugated
Storage:	Store undiluted at 2-8°C for one month or (in aliquots) at -20°C for longer. Avoid repeated freezing and thawing.
Stability:	Shelf life: one year from despatch.
Gene Name:	myosin light chain 9
Database Link:	Entrez Gene 10398 Human P24844
Background:	Myosin, a structural component of muscle, consists of two heavy chains and four light chains. The protein encoded by the MYL9 gene is a myosin light chain that may regulate muscle contraction by modulating the ATPase activity of myosin heads. The encoded protein binds calcium and is activated by myosin light chain kinase; Two transcript variants encoding different isoforms have been found.



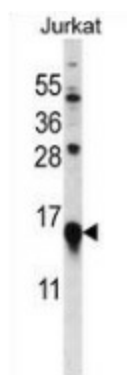
[View online »](#)

Synonyms: MLC2, MRLC1, MYRL2, Myosin RLC, MLC-2C, LC20, smooth muscle

Note: **Molecular Weight:** 19827 Da

Protein Pathways: Focal adhesion, Leukocyte transendothelial migration, Regulation of actin cytoskeleton, Tight junction, Vascular smooth muscle contraction

Product images:



Western blot analysis in Jurkat cell line lysates (35ug/lane) using MYL9 antibody. (C-term). This demonstrates this antibody detected the MYL9 protein (arrow).