

## Product datasheet for **AP52785PU-N**

### MYCBP (N-term) Rabbit Polyclonal Antibody

#### Product data:

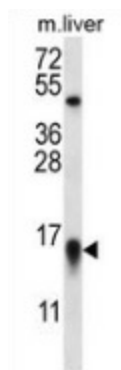
Product Type:	Primary Antibodies
Applications:	WB
Recommended Dilution:	<b>Western blot:</b> 1/100-1/500. Enzyme immunoassay: 1/1000.
Reactivity:	Human, Mouse
Host:	Rabbit
Isotype:	Ig
Clonality:	Polyclonal
Immunogen:	Synthetic peptide - KLH conjugated - corresponding to the N-terminal region (between 1-30aa) of human MYCBP
Specificity:	This antibody recognizes MYCBP at N-term.
Formulation:	PBS with 0.09% (W/V) Sodium azide State: Aff - Purified State: Liquid purified Ig fraction
Concentration:	lot specific
Purification:	Purified through a Protein A column followed by peptide affinity purification
Conjugation:	Unconjugated
Storage:	Store undiluted at 2-8°C for one month or (in aliquots) at -20°C for longer. Avoid repeated freezing and thawing.
Stability:	Shelf life: one year from despatch.
Gene Name:	MYC binding protein
Database Link:	<a href="#">Entrez Gene 56309 Mouse</a> <a href="#">Entrez Gene 26292 Human</a> <a href="#">Q99417</a>
Background:	The MYCBP gene encodes a protein that binds to the N-terminal region of MYC (MIM 190080) and stimulates the activation of E box-dependent transcription by MYC.
Synonyms:	C-Myc-binding protein, AMY1, AMY-1
Note:	<b>Molecular Weight:</b> 11967 Da



[View online »](#)

Protein Families: ES Cell Differentiation/IPS, Transcription Factors

### Product images:



Western blot analysis in mouse liver tissue lysates (35ug/lane) using MYCBP antibody. (N-term). This demonstrates this antibody detected the MYCBP protein (arrow).