

Product datasheet for **AP52781PU-N**

MAD3 (MXD3) (N-term) Rabbit Polyclonal Antibody

Product data:

Product Type:	Primary Antibodies
Applications:	WB
Recommended Dilution:	Western blot: 1/100-1/500. Enzyme immunoassay: 1/1000.
Reactivity:	Human
Host:	Rabbit
Isotype:	Ig
Clonality:	Polyclonal
Immunogen:	Synthetic peptide - KLH conjugated - corresponding to the N-terminal region (between 27-56aa) of human MAD3
Specificity:	This antibody recognizes human MAD3 at N-term.
Formulation:	PBS with 0.09% (W/V) Sodium azide State: Aff - Purified State: Liquid purified Ig fraction
Concentration:	lot specific
Purification:	Purified through a Protein A column followed by peptide affinity purification
Conjugation:	Unconjugated
Storage:	Store undiluted at 2-8°C for one month or (in aliquots) at -20°C for longer. Avoid repeated freezing and thawing.
Stability:	Shelf life: one year from despatch.
Gene Name:	MAX dimerization protein 3
Database Link:	Entrez Gene 83463 Human Q9BW11



[View online »](#)

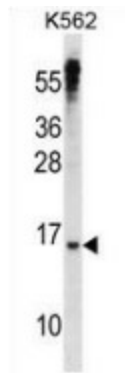
Background: The MXD3 gene encodes a member of the Myc superfamily of basic helix-loop-helix leucine zipper transcriptional regulators. The Max-associated protein 3 / MAD3 forms a heterodimer with the cofactor MAX which binds specific E-box DNA motifs in the promoters of target genes and regulates their transcription. Disruption of the MAX-MXD3 complex is associated with uncontrolled cell proliferation and tumorigenesis. Transcript variants of this gene encoding different isoforms have been described.

Synonyms: MAD-3, MXD3, Max-interacting transcriptional repressor MAD3

Note: **Molecular Weight:** 23477 Da

Protein Families: Druggable Genome, Transcription Factors

Product images:



Western blot analysis in K562 cell line lysates (35ug/lane) using MAD3 antibody. (N-term). This demonstrates this antibody detected the MAD3 protein (arrow).