

Product datasheet for **AP52780PU-N**

MX1 (Center) Rabbit Polyclonal Antibody

Product data:

Product Type:	Primary Antibodies
Applications:	WB
Recommended Dilution:	Western blot: 1/1000. Enzyme immunoassay: 1/1000.
Reactivity:	Human
Host:	Rabbit
Isotype:	Ig
Clonality:	Polyclonal
Immunogen:	Synthetic peptide - KLH conjugated - corresponding to the central region (between 408-437aa) of human MX1
Specificity:	This antibody recognizes human MX1.
Formulation:	PBS with 0.09% (W/V) Sodium azide State: Aff - Purified State: Liquid purified Ig fraction
Concentration:	lot specific
Purification:	Purified through a Protein A column followed by peptide affinity purification
Conjugation:	Unconjugated
Storage:	Store undiluted at 2-8°C for one month or (in aliquots) at -20°C for longer. Avoid repeated freezing and thawing.
Stability:	Shelf life: one year from despatch.
Gene Name:	MX dynamin like GTPase 1
Database Link:	Entrez Gene 4599 Human P20591



[View online »](#)

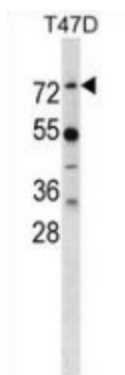
Background: In mouse, the interferon-inducible Mx protein is responsible for a specific antiviral state against influenza virus infection. The protein encoded by the MX1 gene is similar to the mouse protein as determined by its antigenic relatedness, induction conditions, physicochemical properties, and amino acid analysis. This cytoplasmic protein is a member of both the dynamin family and the family of large GTPases. Two transcript variants encoding the same protein have been found for this gene.

Synonyms: Myxovirus resistance protein 1

Note: **Molecular Weight:** 75520 Da

Protein Families: Druggable Genome

Product images:



Western blot analysis in T47D cell line lysates (35ug/lane) using MX1 antibody. This demonstrates this antibody detected the MX1 protein (arrow).