

Product datasheet for **AP52779PU-N**

MYH (MUTYH) (Center) Rabbit Polyclonal Antibody

Product data:

Product Type:	Primary Antibodies
Applications:	FC, IF, WB
Recommended Dilution:	Flow cytometry: 1/10-1/50. Immunofluorescence: 1/10-1/50. Western blot: 1/50-1/100. Enzyme immunoassay: 1/1000.
Reactivity:	Human, Mouse
Host:	Rabbit
Isotype:	Ig
Clonality:	Polyclonal
Immunogen:	Synthetic peptide - KLH conjugated - corresponding to the central region (between 352-381aa) of human MUTYH.
Specificity:	This antibody recognizes MUTYH.
Formulation:	PBS with 0.09% (W/V) Sodium azide State: Purified State: Liquid purified Ig fraction
Concentration:	lot specific
Purification:	Prepared by Saturated Ammonium Sulfate (SAS) precipitation followed by dialysis against PBS
Conjugation:	Unconjugated
Storage:	Store undiluted at 2-8°C for one month or (in aliquots) at -20°C for longer. Avoid repeated freezing and thawing.
Stability:	Shelf life: one year from despatch.
Gene Name:	mutY DNA glycosylase
Database Link:	Entrez Gene 70603 Mouse Entrez Gene 4595 Human Q9UIF7



[View online »](#)

Background: MYH is the eukaryotic homolog to the E. coli protein MutY. It was first identified in HeLa cells and nicks DNA replication errors, specifically A/G mismatches. MYH is involved in oxidative DNA damage repair and initiates repair of A*oxoG to C*G by removing the inappropriately paired adenine base from the DNA backbone. It possesses both adenine and 2-OH-A DNA glycosylase activities.

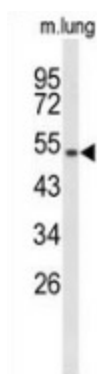
Synonyms: MYH, MutY homolog

Note: **Molecular Weight:** 60069 Da

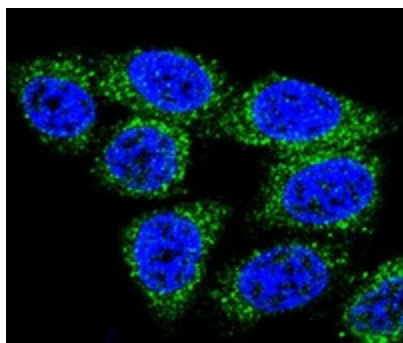
Protein Families: Druggable Genome, Stem cell - Pluripotency

Protein Pathways: Base excision repair

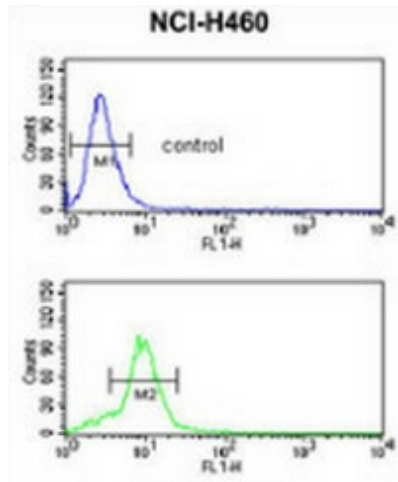
Product images:



Western blot analysis of MUTYH (arrow) in mouse lung tissue lysates (35ug/lane) using MUTYH antibody.



Confocal immunofluorescent analysis of HeLa cells using MUTYH antibody., followed by Alexa Fluor® 488-conjugated goat anti-rabbit IgG (green). DAPI was used to stain the cell nuclear (blue).



Flow cytometric analysis of NCI-H460 cells (bottom histogram) compared to a negative control cell (top histogram) using MUTYH antibody., followed by FITC-conjugated goat-anti-rabbit secondary antibodies.