

Product datasheet for **AP52777PU-N**

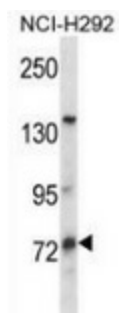
PWWP3B (Center) Rabbit Polyclonal Antibody

Product data:

Product Type:	Primary Antibodies
Applications:	WB
Recommended Dilution:	Western blot: 1/100-1/500. Enzyme immunoassay: 1/1000.
Reactivity:	Human
Host:	Rabbit
Isotype:	Ig
Clonality:	Polyclonal
Immunogen:	Synthetic peptide - KLH conjugated - corresponding to the central region (between 184-213aa) of human MUM1L1
Specificity:	This antibody recognizes human MUM1L1.
Formulation:	PBS with 0.09% (W/V) Sodium azide State: Aff - Purified State: Liquid purified Ig fraction
Concentration:	lot specific
Purification:	Purified through a Protein A column followed by peptide affinity purifi
Conjugation:	Unconjugated
Storage:	Store undiluted at 2-8°C for one month or (in aliquots) at -20°C for longer. Avoid repeated freezing and thawing.
Stability:	Shelf life: one year from despatch.
Gene Name:	melanoma associated antigen (mutated) 1-like 1
Database Link:	Entrez Gene 139221 Human Q5H9M0
Synonyms:	MUM1-like protein 1
Note:	Molecular Weight: 79040 Da



[View online »](#)

Product images:

Western blot analysis in NCI-H292 cell line lysates (35ug/lane) using MUM1L1 antibody. This demonstrates this antibody detected the MUM1L1 protein (arrow).