

Product datasheet for **AP52776PU-N**

E3 ubiquitin protein ligase MUL1 (MUL1) (C-term) Rabbit Polyclonal Antibody

Product data:

Product Type:	Primary Antibodies
Applications:	WB
Recommended Dilution:	Western blot: 1/1000. Enzyme immunoassay: 1/1000.
Reactivity:	Human
Host:	Rabbit
Isotype:	Ig
Clonality:	Polyclonal
Immunogen:	Synthetic peptide - KLH conjugated - corresponding to the C-terminal region (between 272-301 aa) of human MUL1 / RNF218
Specificity:	This antibody recognizes MUL1 / RNF218 at C-term.
Formulation:	PBS with 0.09% (W/V) Sodium azide State: Aff - Purified State: Liquid purified Ig fraction
Concentration:	lot specific
Purification:	Purified through a Protein A column followed by peptide affinity purification
Conjugation:	Unconjugated
Storage:	Store undiluted at 2-8°C for one month or (in aliquots) at -20°C for longer. Avoid repeated freezing and thawing.
Stability:	Shelf life: one year from despatch.
Gene Name:	mitochondrial E3 ubiquitin protein ligase 1
Database Link:	Entrez Gene 79594 Human Q969V5



[View online »](#)

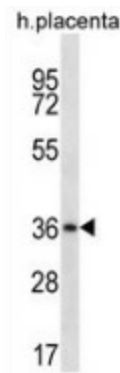
Background: E3 ubiquitin-protein ligase that plays a role in the control of mitochondrial morphology. Promotes mitochondrial fragmentation and influences mitochondrial localization. Inhibits cell growth. When overexpressed, activates JNK through MAP3K7/TAK1 and induces caspase-dependent apoptosis. E3 ubiquitin ligases accept ubiquitin from an E2 ubiquitin-conjugating enzyme in the form of a thioester and then directly transfer the ubiquitin to targeted substrates.

Synonyms: C1orf166, GIDE, MAPL, MULAN, RING finger protein 218

Note: **Molecular Weight:** 39800 Da

Protein Families: Druggable Genome, Transmembrane

Product images:



Western blot analysis in human placenta tissue lysates (35ug/lane) using MUL1 / RNF218 antibody. (C-term). This demonstrates this antibody detected the MUL1 protein (arrow).