

Product datasheet for **AP52774PU-N**

EMA (MUC1) Rabbit Polyclonal Antibody

Product data:

Product Type:	Primary Antibodies
Applications:	WB
Recommended Dilution:	Western blot: 1/100-1/500. Enzyme immunoassay: 1/1000.
Reactivity:	Human
Host:	Rabbit
Isotype:	Ig
Clonality:	Polyclonal
Immunogen:	Synthetic peptide - KLH conjugated - corresponding to human CD227 / Mucin-1 / MUC1 (between 1202-1231 aa)
Specificity:	This antibody recognizes human CD227 / Mucin-1 / MUC1.
Formulation:	PBS with 0.09% (W/V) Sodium azide State: Aff - Purified State: Liquid purified Ig fraction
Concentration:	lot specific
Purification:	Purified through a Protein A column followed by peptide affinity purification
Conjugation:	Unconjugated
Storage:	Store undiluted at 2-8°C for one month or (in aliquots) at -20°C for longer. Avoid repeated freezing and thawing.
Stability:	Shelf life: one year from despatch.
Gene Name:	mucin 1, cell surface associated
Database Link:	Entrez Gene 4582 Human P15941



[View online »](#)

Background:

The MUC1 gene is a member of the mucin family and encodes a membrane bound, glycosylated phosphoprotein anchored to the apical surface of many epithelia by a transmembrane domain, with the degree of glycosylation varying with cell type. It includes a 20aa variable number tandem repeat (VNTR) domain, with the number of repeats varying from 20 to 120 in different individuals. The protein serves a protective function by binding to pathogens and also functions in a cell signaling capacity. Its overexpression, aberrant intracellular localization and changes in glycosylation have been associated with carcinoma. Multiple alternatively spliced transcript variants that encode different isoforms of this gene have been reported, but the full-length nature of only some has been determined.

Synonyms:

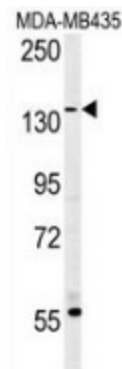
MUC-1, PEMT, Episialin, EMA, H23AG, PUM, DF3, CA 15-3

Note:

Molecular Weight: 122102 Da

Protein Families:

Druggable Genome, Secreted Protein, Transmembrane

Product images:

Western blot analysis in MDA-MB435 cell line lysates (35ug/lane) using CD227 / Mucin-1 / MUC1 antibody. This demonstrates this antibody detected the MUC1 protein (arrow).