

Product datasheet for **AP52773PU-N**

MUC15 (C-term) Rabbit Polyclonal Antibody

Product data:

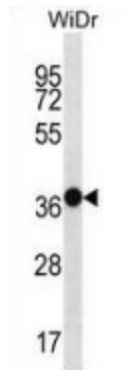
Product Type:	Primary Antibodies
Applications:	IHC, WB
Recommended Dilution:	Immunohistochemistry on Paraffin sections: 1/10-1/50. Western blot: 1/100-1/500. Enzyme immunoassay: 1/1000.
Reactivity:	Human
Host:	Rabbit
Isotype:	Ig
Clonality:	Polyclonal
Immunogen:	Synthetic peptide - KLH conjugated - corresponding to the C-terminal region (between 208-237aa) of human Mucin-15
Specificity:	This antibody recognizes Mucin-15 at C-term.
Formulation:	PBS with 0.09% (W/V) Sodium azide State: Aff - Purified State: Liquid purified Ig fraction
Concentration:	lot specific
Purification:	Purified through a Protein A column followed by peptide affinity purification
Conjugation:	Unconjugated
Storage:	Store undiluted at 2-8°C for one month or (in aliquots) at -20°C for longer. Avoid repeated freezing and thawing.
Stability:	Shelf life: one year from despatch.
Gene Name:	mucin 15, cell surface associated
Database Link:	Entrez Gene 143662 Human Q8N387
Background:	MUC15 may play a role in the cell adhesion to the extracellular matrix.
Synonyms:	MUC15, UNQ750/PRO1481, MUC-15
Note:	Molecular Weight: 36294 Da



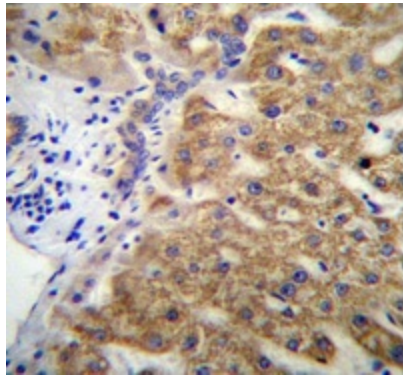
[View online »](#)

Protein Families: Secreted Protein, Transmembrane

Product images:



Western blot analysis in WiDr cell line lysates (35ug/lane) using Mucin-15 antibody. (C-term). This demonstrates this antibody detected the Mucin-15 protein (arrow).



Immunohistochemistry analysis in human liver tissue (Formalin-fixed, Paraffin-embedded) using Mucin-15 antibody. (C-term), followed by peroxidase conjugated secondary antibody and DAB staining. This data demonstrates the use of this antibody for IHC. Clinical relevance has not been evaluated.