

Product datasheet for **AP52772PU-N**

MTX2 (C-term) Rabbit Polyclonal Antibody

Product data:

Product Type:	Primary Antibodies
Applications:	FC, IHC, WB
Recommended Dilution:	Flow cytometry: 1/10-1/50. Immunohistochemistry on Paraffin sections: 1/50-1/100. Western blot: 1/100-1/500. Enzyme immunoassay: 1/1000.
Reactivity:	Human
Host:	Rabbit
Isotype:	Ig
Clonality:	Polyclonal
Immunogen:	Synthetic peptide - KLH conjugated - corresponding to the C-terminal region (between 235-265aa) of human Metaxin-2.
Specificity:	This antibody recognizes Metaxin-2 at C-term.
Formulation:	PBS with 0.09% (W/V) Sodium azide State: Aff - Purified State: Liquid purified Ig fraction
Concentration:	lot specific
Purification:	Purified through a Protein A column followed by peptide affinity purification
Conjugation:	Unconjugated
Storage:	Store undiluted at 2-8°C for one month or (in aliquots) at -20°C for longer. Avoid repeated freezing and thawing.
Stability:	Shelf life: one year from despatch.
Gene Name:	metaxin 2
Database Link:	Entrez Gene 10651 Human O75431



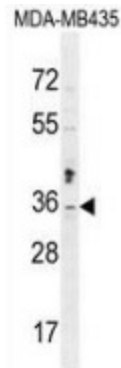
[View online »](#)

Background:

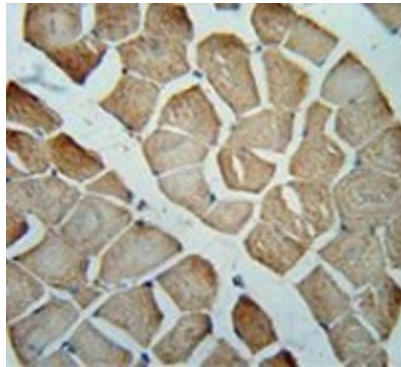
The protein encoded by the MTX2 gene is highly similar to the metaxin 2 protein from mouse, which has been shown to interact with the mitochondrial membrane protein metaxin 1. Because of this similarity, it is thought that the encoded protein is peripherally associated with the cytosolic face of the outer mitochondrial membrane, and that it is involved in the import of proteins into the mitochondrion. Alternative splicing results in multiple transcript variants. A related pseudogene has been identified on chromosome 7.

Synonyms:

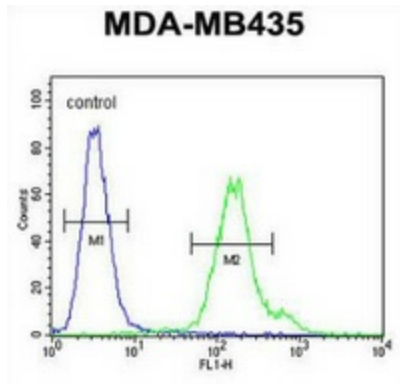
MTX2

Note:**Molecular Weight:** 29763 Da**Product images:**

Western blot analysis in MDA-MB435 cell line lysates (35ug/lane) using Metaxin-2 antibody. (C-term). This demonstrates this antibody detected the Metaxin-2 protein (arrow).



Immunohistochemistry analysis in human skeletal muscle (Formalin-fixed, Paraffin-embedded) using Metaxin-2 antibody. (C-term), followed by peroxidase conjugated secondary antibody and DAB staining. This data demonstrates the use of this antibody for IHC. Clinical relevance has not been evaluated.



Flow cytometric analysis of MDA-MB435 cells (right histogram) compared to a negative control cell (left histogram) using Metaxin-2 antibody. (C-term), followed by FITC-conjugated goat-anti-rabbit secondary antibodies.