

## Product datasheet for **AP52768PU-N**

### MTMR6 (N-term) Rabbit Polyclonal Antibody

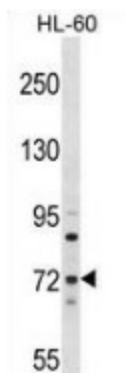
#### Product data:

Product Type:	Primary Antibodies
Applications:	WB
Recommended Dilution:	<b>Western blot:</b> 1/1,000. <b>Enzyme immunoassay:</b> 1/1,000.
Reactivity:	Human
Host:	Rabbit
Isotype:	Ig
Clonality:	Polyclonal
Immunogen:	KLH conjugated synthetic peptide between 114-143 amino acids from the N-terminal region of Human MTMR6.
Specificity:	This antibody recognizes Human MTMR6 at N-term. Other species not tested.
Formulation:	PBS with 0.09% (W/V) Sodium Azide State: Aff - Purified State: Liquid purified Ig fraction
Concentration:	lot specific
Purification:	Purified through a Protein A column followed by peptide affinity purification
Conjugation:	Unconjugated
Storage:	Store undiluted at 2-8°C for one month or (in aliquots) at -20°C for longer. Avoid repeated freezing and thawing.
Stability:	Shelf life: one year from despatch.
Gene Name:	myotubularin related protein 6
Database Link:	<a href="#">Entrez Gene 9107 Human Q9Y217</a>
Background:	Myotubularin-related protein 6 is a phosphatase that acts on lipids with a phosphoinositol headgroup. It acts as a negative regulator of KCNN4/KCa3.1 channel activity in CD4+ T-cells possibly by decreasing intracellular levels of phosphatidylinositol-3 phosphatase and negatively regulates proliferation of reactivated CD4+ T-cells



[View online »](#)

Synonyms:	Myotubularin-related protein 6
Note:	<b>Molecular Weight:</b> 71954 Da
Protein Families:	Druggable Genome, Phosphatase
Protein Pathways:	Fructose and mannose metabolism, Metabolic pathways, Riboflavin metabolism, Thiamine metabolism

**Product images:**

Western blot analysis in HL-60 cell line lysates (35ug/lane) using MTMR6 antibody. (N-term). This demonstrates this antibody detected the MTMR6 protein (arrow).