

Product datasheet for **AP52766PU-N**

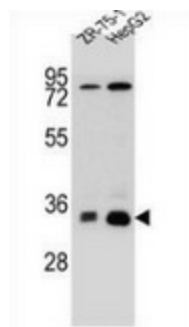
MTHFD2 (MTHFD2L) (C-term) Rabbit Polyclonal Antibody

Product data:

Product Type:	Primary Antibodies
Applications:	WB
Recommended Dilution:	Western blot: 1/100-1/500. Enzyme immunoassay: 1/1000.
Reactivity:	Human
Host:	Rabbit
Isotype:	Ig
Clonality:	Polyclonal
Immunogen:	Synthetic peptide - KLH conjugated - corresponding to the C-terminal region (between 223-252aa) of human MTHFD2L
Specificity:	This antibody recognizes human MTHFD2L at C-term.
Formulation:	PBS with 0.09% (W/V) Sodium azide State: Aff - Purified State: Liquid purified Ig fraction
Concentration:	lot specific
Purification:	Purified through a Protein A column followed by peptide affinity purification
Conjugation:	Unconjugated
Storage:	Store undiluted at 2-8°C for one month or (in aliquots) at -20°C for longer. Avoid repeated freezing and thawing.
Stability:	Shelf life: one year from despatch.
Gene Name:	methylenetetrahydrofolate dehydrogenase (NADP+ dependent) 2-like
Database Link:	Entrez Gene 441024 Human Q9H903
Synonyms:	FLJ13105; MGC45532; MGC72244
Note:	Molecular Weight: 31285 Da



[View online »](#)

Product images:

Western blot analysis in HepG2, ZR-75-1 cell line lysates (35ug/lane) using MTHFD2L antibody. (C-term). This demonstrates this antibody detected the MTHFD2L protein (arrow).