

Product datasheet for **AP52763PU-N**

MTA3 (C-term) Rabbit Polyclonal Antibody

Product data:

Product Type:	Primary Antibodies
Applications:	WB
Recommended Dilution:	Western blot: 1/100-1/500. Enzyme immunoassay: 1/1000.
Reactivity:	Human
Host:	Rabbit
Isotype:	Ig
Clonality:	Polyclonal
Immunogen:	Synthetic peptide - KLH conjugated - corresponding to the C-terminal region (between 558-587aa) of human MTA3.
Specificity:	This antibody recognizes human MTA3 at C-term.
Formulation:	PBS with 0.09% (W/V) Sodium azide State: Aff - Purified State: Liquid purified Ig fraction
Concentration:	lot specific
Purification:	Purified through a Protein A column followed by peptide affinity purification
Conjugation:	Unconjugated
Storage:	Store undiluted at 2-8°C for one month or (in aliquots) at -20°C for longer. Avoid repeated freezing and thawing.
Stability:	Shelf life: one year from despatch.
Gene Name:	metastasis associated 1 family member 3
Database Link:	Entrez Gene 57504 Human Q9BTC8
Background:	MTA3 plays a role in maintenance of the normal epithelial architecture through the repression of SNAI1 transcription in a histone deacetylase-dependent manner, and thus the regulation of E-cadherin levels.
Synonyms:	KIAA1266

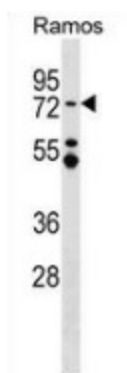


[View online »](#)

Note: **Molecular Weight:** 67504 Da

Protein Families: Transcription Factors

Product images:



Western blot analysis in Ramos cell line lysates (35ug/lane) using MTA3 antibody. (C-term). This demonstrates this antibody detected the MTA3 protein (arrow).