

## Product datasheet for **AP52762PU-N**

### **MSX2 (Center) Rabbit Polyclonal Antibody**

#### **Product data:**

Product Type:	Primary Antibodies
Applications:	WB
Recommended Dilution:	<b>ELISA:</b> 1/1000. <b>Western Blot:</b> 1/100-1/500.
Reactivity:	Human
Host:	Rabbit
Isotype:	Ig
Clonality:	Polyclonal
Immunogen:	KLH conjugated synthetic peptide between 119-148 amino acids from the Central region of human MSX2
Specificity:	This antibody recognizes Human MSX2 (Center).
Formulation:	PBS containing 0.09% (W/V) Sodium Azide as preservative State: Aff - Purified State: Liquid purified Ig fraction
Concentration:	lot specific
Purification:	Protein A column, followed by peptide affinity purification
Conjugation:	Unconjugated
Storage:	Store undiluted at 2-8°C for one month or (in aliquots) at -20°C for longer. Avoid repeated freezing and thawing.
Stability:	Shelf life: one year from despatch.
Gene Name:	msh homeobox 2
Database Link:	<a href="#">Entrez Gene 4488 Human P35548</a>



[View online »](#)

**Background:**

This gene encodes a member of the muscle segment homeobox gene family. The encoded protein is a transcriptional repressor whose normal activity may establish a balance between survival and apoptosis of neural crest-derived cells required for proper craniofacial morphogenesis. The encoded protein may also have a role in promoting cell growth under certain conditions and may be an important target for the RAS signaling pathways. Mutations in this gene are associated with parietal foramina 1 and craniosynostosis type 2.

**Synonyms:**

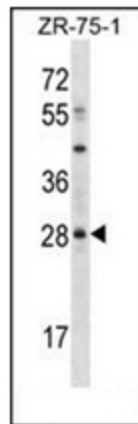
MSX-2, HOX8, HOX-8

**Note:**

**Molecular Weight:** 28897 Da

**Protein Families:**

Druggable Genome, Transcription Factors

**Product images:**

Western blot analysis of MSX2 Antibody (Center) in ZR-75-1 cell line lysates (35ug/lane). This demonstrates the MSX2 antibody detected the MSX2 protein (arrow).