

Product datasheet for **AP52761PU-N**

MST1 (C-term) Rabbit Polyclonal Antibody

Product data:

Product Type:	Primary Antibodies
Applications:	FC, IHC, WB
Recommended Dilution:	ELISA: 1/1000. Western Blot: 1/100-1/500. Flow Cytometry: 1/10-1/50. Immunohistochemistry on Paraffin Sections: 1/10-1/50.
Reactivity:	Human
Host:	Rabbit
Isotype:	Ig
Clonality:	Polyclonal
Immunogen:	KLH conjugated synthetic peptide between 475-505 amino acids from the C-terminal region of human MST1
Specificity:	This antibody recognizes Human MST1 (C-term).
Formulation:	PBS containing 0.09% (W/V) Sodium Azide as preservative State: Aff - Purified State: Liquid purified Ig fraction
Concentration:	lot specific
Purification:	Protein A column, followed by peptide affinity purification
Conjugation:	Unconjugated
Storage:	Store undiluted at 2-8°C for one month or (in aliquots) at -20°C for longer. Avoid repeated freezing and thawing.
Stability:	Shelf life: one year from despatch.
Gene Name:	macrophage stimulating 1
Database Link:	Entrez Gene 4485 Human P26927



[View online »](#)

Background:

The protein encoded by this gene contains four kringle domains and a serine protease domain, similar to that found in hepatic growth factor. Despite the presence of the serine protease domain, the encoded protein may not have any proteolytic activity. The receptor for this protein is RON tyrosine kinase, which upon activation stimulates ciliary motility of ciliated epithelial lung cells. This protein is secreted and cleaved to form an alpha chain and a beta chain bridged by disulfide bonds.

Synonyms:

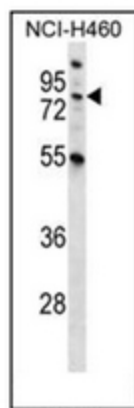
MST1, D3F15S2, DNF15S2, HGFL, Macrophage-stimulating protein, Hepatocyte growth factor-like protein, MSP

Note:

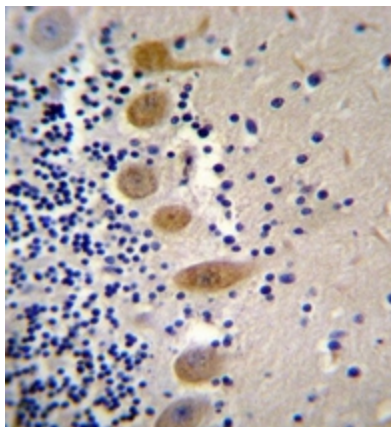
Molecular Weight: 80320 Da

Protein Families:

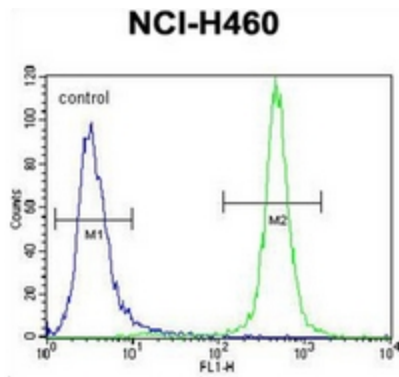
Druggable Genome

Product images:


Western blot analysis of MST1 Antibody (C-term) in NCI-H460 cell line lysates (35ug/lane). This demonstrates the MST1 antibody detected the MST1 protein (arrow).



Immunohistochemistry analysis in formalin fixed and paraffin embedded human cerebellum tissue reacted with MST1 Antibody (C-term), which was peroxidase conjugated to the secondary antibody and followed by DAB staining. This data demonstrates the use of MST1 Antibody (C-term) for immunohistochemistry. Clinical relevance has not been evaluated.



Flow cytometric analysis of NCI-H460 cells using MST1 Antibody (C-term) (right histogram) compared to a negative control cell (left histogram). FITC-conjugated goat-anti-rabbit secondary antibodies were used for the analysis.