

Product datasheet for **AP52756PU-N**

MSGN1 (Center) Rabbit Polyclonal Antibody

Product data:

Product Type:	Primary Antibodies
Applications:	WB
Recommended Dilution:	ELISA: 1/1000. Western Blot: 1/100-1/500.
Reactivity:	Human
Host:	Rabbit
Isotype:	Ig
Clonality:	Polyclonal
Immunogen:	KLH conjugated synthetic peptide between 96-125 amino acids from the Central region of human MSGN1
Specificity:	This antibody recognizes Human MSGN1 (Center).
Formulation:	PBS containing 0.09% (W/V) Sodium Azide as preservative State: Aff - Purified State: Liquid purified Ig fraction
Concentration:	lot specific
Purification:	Protein A column, followed by peptide affinity purification
Conjugation:	Unconjugated
Storage:	Store undiluted at 2-8°C for one month or (in aliquots) at -20°C for longer. Avoid repeated freezing and thawing.
Stability:	Shelf life: one year from despatch.
Gene Name:	mesogenin 1
Database Link:	Entrez Gene 343930 Human A6NI15
Background:	MSGN1 is involved in the formation and segmentation of paraxial mesoderm. Has the regulatory capacity to specify ventrolateral (including future paraxial), but not dorsal (future axial), mesoderm phenotypes. Seems to be an upstream regulator of at least some elements of the Notch and Delta signaling pathway (By similarity).
Synonyms:	MSGN1, Paraxial mesoderm-specific mesogenin1, pMesogenin1, pMsgn1

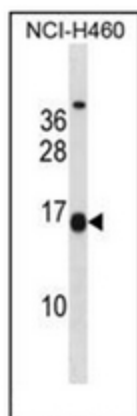


[View online »](#)

Note: **Molecular Weight:** 20778 Da

Protein Families: Druggable Genome

Product images:



Western blot analysis of MSGN1 Antibody (Center) in NCI-H460 cell line lysates (35ug/lane). This demonstrates the MSGN1 antibody detected the MSGN1 protein (arrow).