

## Product datasheet for **AP52750PU-N**

### MRP L9 (MRPL9) (N-term) Rabbit Polyclonal Antibody

#### Product data:

Product Type:	Primary Antibodies
Applications:	IHC, WB
Recommended Dilution:	<b>Immunohistochemistry on Paraffin sections:</b> 1/10-1/50. <b>Western blot:</b> 1/100-1/500. Enzyme immunoassay: 1/1000.
Reactivity:	Human
Host:	Rabbit
Isotype:	Ig
Clonality:	Polyclonal
Immunogen:	Synthetic peptide - KLH conjugated - corresponding to the N-terminal (between 65-95aa) region of human MRPL9.
Specificity:	This antibody recognizes human MRPL9 at N-term.
Formulation:	PBS with 0.09% (W/V) Sodium azide State: Aff - Purified State: Liquid purified Ig fraction
Concentration:	lot specific
Purification:	Purified through a Protein A column followed by peptide affinity purification
Conjugation:	Unconjugated
Storage:	Store undiluted at 2-8°C for one month or (in aliquots) at -20°C for longer. Avoid repeated freezing and thawing.
Stability:	Shelf life: one year from despatch.
Gene Name:	mitochondrial ribosomal protein L9
Database Link:	<a href="#">Entrez Gene 65005 Human</a> <a href="#">Q9BYD2</a>



[View online »](#)

**Background:**

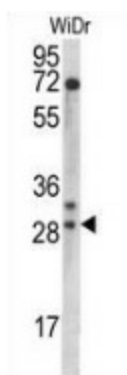
Mammalian mitochondrial ribosomal proteins are encoded by nuclear genes and help in protein synthesis within the mitochondrion. Mitochondrial ribosomes (mitoribosomes) consist of a small 28S subunit and a large 39S subunit. They have an estimated 75% protein to rRNA composition compared to prokaryotic ribosomes, where this ratio is reversed. Another difference between mammalian mitoribosomes and prokaryotic ribosomes is that the latter contain a 5S rRNA. Among different species, the proteins comprising the mitoribosome differ greatly in sequence, and sometimes in biochemical properties, which prevents easy recognition by sequence homology. The MRPL9 gene encodes a 39S subunit protein. A pseudogene corresponding to this gene is found at 8q21.11.

**Synonyms:**

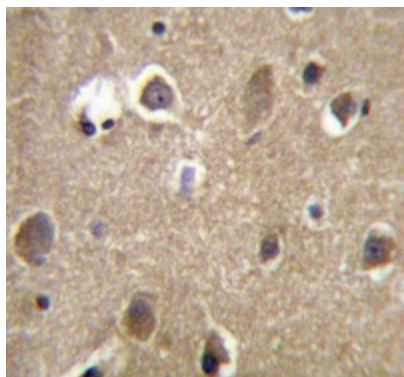
L9mt, MRP-L9

**Note:**

**Molecular Weight:** 30243 Da

**Product images:**


Western blot analysis in WiDr cell line lysates (35ug/lane) using MRPL9 antibody. (N-term). This demonstrates this antibody detected the MRPL9 protein (arrow).



Immunohistochemistry analysis in human brain tissue (Formalin-fixed, Paraffin-embedded) using MRPL9 antibody. (N-term), followed by peroxidase conjugated secondary antibody and DAB staining. This data demonstrates the use of this antibody for IHC. Clinical relevance has not been evaluated.