

## Product datasheet for **AP52748PU-N**

### MRM1 (N-term) Rabbit Polyclonal Antibody

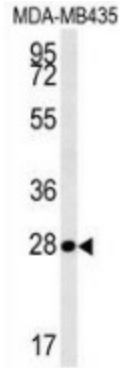
#### Product data:

Product Type:	Primary Antibodies
Applications:	FC, IHC, WB
Recommended Dilution:	<b>Flow cytometry:</b> 1/10-1/50. <b>Immunohistochemistry on Paraffin sections:</b> 1/50-1/100. <b>Western blot:</b> 1/100-1/500. Enzyme immunoassay: 1/1000.
Reactivity:	Human
Host:	Rabbit
Isotype:	Ig
Clonality:	Polyclonal
Immunogen:	Synthetic peptide - KLH conjugated - corresponding to the N-terminal region (between 87-117aa) of human MRM1
Specificity:	This antibody recognizes MRM1 at N-term.
Formulation:	PBS with 0.09% (W/V) Sodium azide State: Aff - Purified State: Liquid purified Ig fraction
Concentration:	lot specific
Purification:	Purified through a Protein A column followed by peptide affinity purification
Conjugation:	Unconjugated
Storage:	Store undiluted at 2-8°C for one month or (in aliquots) at -20°C for longer. Avoid repeated freezing and thawing.
Stability:	Shelf life: one year from despatch.
Gene Name:	mitochondrial rRNA methyltransferase 1
Database Link:	<a href="#">Entrez Gene 79922 Human Q6IN84</a>
Synonyms:	rRNA methyltransferase 1, mitochondrial
Note:	<b>Molecular Weight:</b> 38638 Da

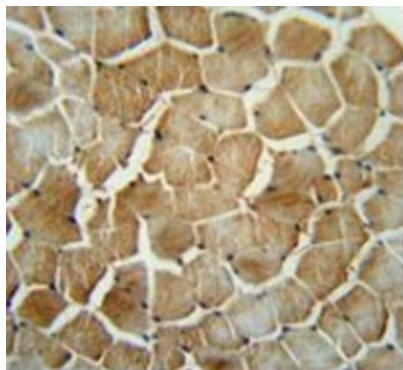


[View online »](#)

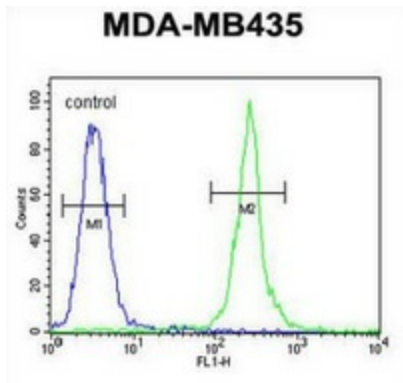
**Product images:**



Western blot analysis in MDA-MB435 cell line lysates (35ug/lane) using MRM1 antibody. (N-term). This demonstrates this antibody detected the MRM1 protein (arrow).



Immunohistochemistry analysis human skeletal muscle (Formalin-fixed, Paraffin-embedded) using MRM1 antibody. (N-term), followed by peroxidase conjugated secondary antibody and DAB staining. This data demonstrates the use of this antibody for IHC. Clinical relevance has not been evaluated.



Flow cytometric analysis of MDA-MB435 cells (right histogram) compared to a negative control cell (left histogram) using MRM1 antibody. (N-term), followed by FITC-conjugated goat-anti-rabbit secondary antibodies.