

Product datasheet for **AP52746PU-N**

GPCR MRGX2 (MRGPRX2) (C-term) Rabbit Polyclonal Antibody

Product data:

Product Type:	Primary Antibodies
Applications:	WB
Recommended Dilution:	Western blot: 1/100-1/500. Enzyme immunoassay: 1/1000.
Reactivity:	Human
Host:	Rabbit
Isotype:	Ig
Clonality:	Polyclonal
Immunogen:	Synthetic peptide - KLH conjugated - corresponding to the C-terminal region (between 286-316aa) of human MRGPRX2.
Specificity:	This antibody recognizes MRGPRX2 at C-term.
Formulation:	PBS with 0.09% (W/V) Sodium azide State: Aff - Purified State: Liquid purified Ig fraction
Concentration:	lot specific
Purification:	Purified through a Protein A column followed by peptide affinity purification
Conjugation:	Unconjugated
Storage:	Store undiluted at 2-8°C for one month or (in aliquots) at -20°C for longer. Avoid repeated freezing and thawing.
Stability:	Shelf life: one year from despatch.
Gene Name:	MAS related GPR family member X2
Database Link:	Entrez Gene 117194 Human Q96LB1



[View online »](#)

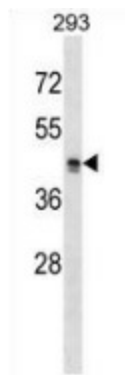
Background: MRGPRX2 is the orphan receptor. Probably involved in the function of nociceptive neurons. May regulate nociceptor function and/or development, including the sensation or modulation of pain. Cortistatin-14 seems to be a high potency ligand at this receptor. Cortistatin has several biological functions including roles in sleep regulation locomotor activity, and cortical function. In receptor-expressing cells, cortistatin-stimulated increases in intracellular Ca(2+) but had no effect on basal or forskolin-stimulated cAMP levels, suggesting that this receptor is G(q)-coupled.

Synonyms: MRGX2

Note: **Molecular Weight:** 37099 Da

Protein Families: Druggable Genome, GPCR, Transmembrane

Product images:



Western blot analysis in 293 cell line lysates (35ug/lane) using MRGPRX2 antibody. (C-term). This demonstrates this antibody detected the MRGPRX2 protein (arrow).