

Product datasheet for **AP52745PU-N**

MRFAP1L1 (Center) Rabbit Polyclonal Antibody

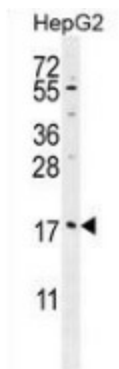
Product data:

Product Type:	Primary Antibodies
Applications:	FC, WB
Recommended Dilution:	Flow cytometry: 1/10-1/50. Western blot: 1/1000. Enzyme immunoassay: 1/1000.
Reactivity:	Human
Host:	Rabbit
Isotype:	Ig
Clonality:	Polyclonal
Immunogen:	Synthetic peptide - KLH conjugated - corresponding to the central region (between 28-56aa) of human MRFAP1L1.
Specificity:	This antibody recognizes human MRFAP1L1.
Formulation:	PBS with 0.09% (W/V) Sodium azide State: Aff - Purified State: Liquid purified Ig fraction
Concentration:	lot specific
Purification:	Purified through a Protein A column followed by peptide affinity purification
Conjugation:	Unconjugated
Storage:	Store undiluted at 2-8°C for one month or (in aliquots) at -20°C for longer. Avoid repeated freezing and thawing.
Stability:	Shelf life: one year from despatch.
Gene Name:	Morf4 family associated protein 1 like 1
Database Link:	Entrez Gene 114932 Human Q96HT8
Synonyms:	MORF4 family-associated protein 1-like 1
Note:	Molecular Weight: 14808 Da

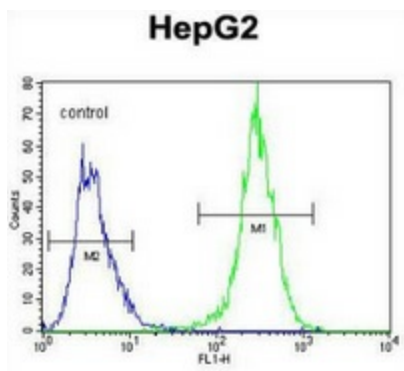


[View online »](#)

Product images:



Western blot analysis in HepG2 cell line lysates (35ug/lane) using MRFAP1L1 antibody. This demonstrates this antibody detected the MRFAP1L1 protein (arrow).



Flow cytometric analysis of HepG2 cells (right histogram) compared to a negative control cell (left histogram) using MRFAP1L1 antibody., followed by FITC-conjugated goat-anti-rabbit secondary antibodies.