

## Product datasheet for **AP52744PU-N**

### MRC2 (Center) Rabbit Polyclonal Antibody

#### Product data:

Product Type:	Primary Antibodies
Applications:	WB
Recommended Dilution:	<b>Western blot:</b> 1/100-1/500.
Reactivity:	Human
Host:	Rabbit
Isotype:	Ig
Clonality:	Polyclonal
Immunogen:	Synthetic peptide - KLH conjugated - corresponding to the central region (between 797-827aa) of human C280 / MRC2.
Specificity:	This antibody recognizes CD280 /MRC2.
Formulation:	PBS with 0.09% (W/V) Sodium azide State: Aff - Purified State: Liquid purified Ig fraction
Concentration:	lot specific
Purification:	Purified through a Protein A column followed by peptide affinity purification
Conjugation:	Unconjugated
Storage:	Store undiluted at 2-8°C for one month or (in aliquots) at -20°C for longer. Avoid repeated freezing and thawing.
Stability:	Shelf life: one year from despatch.
Gene Name:	mannose receptor C type 2
Database Link:	<a href="#">Entrez Gene 9902 Human Q9UBG0</a>
Background:	MRC2 is a recycling endocytic receptor that functions in cell motility and remodeling of the extracellular matrix by promoting cell migration and uptake of collagens for intracellular degradation [ <i>Wienke et al., 2007; PubMed 17974964</i> ]



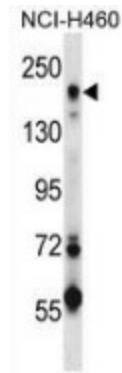
[View online »](#)

**Synonyms:** C-type mannose receptor 2, ENDO180, KIAA0709, UPARAP, UPAR-associated protein, Urokinase receptor-associated protein, Endocytic receptor 180, Macrophage mannose receptor 2

**Note:** **Molecular Weight:** 166655 Da

**Protein Families:** Druggable Genome, Transmembrane

**Product images:**



Western blot analysis in NCI-H460 cell line lysates (35ug/lane) using CD280 / MRC2 antibody. This demonstrates this antibody detected the MRC2 protein (arrow).