

## Product datasheet for **AP52743PU-N**

### Mannose Receptor (MRC1) (N-term) Rabbit Polyclonal Antibody

#### Product data:

Product Type:	Primary Antibodies
Applications:	WB
Recommended Dilution:	<b>Western blot:</b> 1/100-1/500. Enzyme immunoassay: 1/1000.
Reactivity:	Human, Mouse
Host:	Rabbit
Isotype:	Ig
Clonality:	Polyclonal
Immunogen:	Synthetic peptide - KLH conjugated - corresponding to the N-terminal region (between 358-388aa) of human CD206 / MRC1.
Specificity:	This antibody recognizes CD 206 / MRC1 at N-term.
Formulation:	PBS with 0.09% (W/V) Sodium azide State: Aff - Purified State: Liquid purified Ig fraction
Concentration:	lot specific
Purification:	Purified through a Protein A column followed by peptide affinity purification
Conjugation:	Unconjugated
Storage:	Store undiluted at 2-8°C for one month or (in aliquots) at -20°C for longer. Avoid repeated freezing and thawing.
Stability:	Shelf life: one year from despatch.  
Gene Name:	mannose receptor, C type 1
Database Link:	<a href="#">Entrez Gene 414308</a> <a href="#">Entrez Gene 4360 Human P22897</a>



[View online »](#)

**Background:**

CD206 is a transmembrane protein and member of the multilectin family of pattern recognition receptors (PRRs), which mediates phagocytosis and endocytosis, and is modulated by a range of factors including cytokines, immunoglobulin receptors and pathogens. CD206 has two extracellular lectin binding sites: the cysteine-rich domain binds to sulphated sugars of glycoproteins such as thyroid stimulating hormone, whilst the recognition of mannose and fucose occurs through carbohydrate recognition domains (CRDs). The widespread distribution and recognition of a wide range of antigens by macrophages, plays a key role in both innate and adaptive immunity, with CD206 able to bind to both gram-negative and gram-positive bacteria, mycobacterium, yeasts, fungi and parasites. The expression of CD206 is not restricted to macrophages, but is also present on immature dendritic cells (DCs), endothelial cells, kidney mesangial cells, retinal pigment epithelium and tracheal smooth muscle cells.

**Synonyms:**

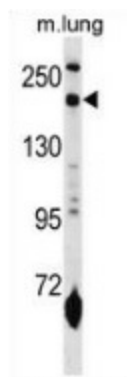
Macrophage mannose receptor, CLEC13D, CLEC13DL, MRC1L1

**Note:**

**Molecular Weight:** 166046 Da

**Protein Families:**

Druggable Genome, Transmembrane

**Product images:**

Western blot analysis in mouse lung tissue lysates (35ug/lane) using CD206 / MRC1 antibody. (N-term). This demonstrates this antibody detected the MRC1 protein (arrow).