

Product datasheet for **AP52741PU-N**

VAM1 (MPP6) (Center) Rabbit Polyclonal Antibody

Product data:

Product Type:	Primary Antibodies
Applications:	FC, WB
Recommended Dilution:	Flow cytometry: 1/10-1/50. Western blot: 1/500-1/100. Enzyme immunoassay: 1/1000.
Reactivity:	Human, Mouse
Host:	Rabbit
Isotype:	Ig
Clonality:	Polyclonal
Immunogen:	Synthetic peptide - KLH conjugated - corresponding to the central region (between 367-396aa) of human MPP6 / MAGUK p55 subfamily member 6
Specificity:	This antibody recognizes MPP6 / MAGUK p55 subfamily member 6.
Formulation:	PBS with 0.09% (W/V) Sodium azide State: Purified State: Liquid purified Ig fraction
Concentration:	lot specific
Purification:	Prepared by Saturated Ammonium Sulfate (SAS) precipitation followed by dialysis against PBS
Conjugation:	Unconjugated
Storage:	Store undiluted at 2-8°C for one month or (in aliquots) at -20°C for longer. Avoid repeated freezing and thawing.
Stability:	Shelf life: one year from despatch.
Gene Name:	membrane palmitoylated protein 6
Database Link:	Entrez Gene 56524 Mouse Entrez Gene 51678 Human Q9NZW5



[View online »](#)

Background:

MPP6 is a member of the p55-like MAGUK subfamily. Members of the peripheral membrane-associated guanylate kinase (MAGUK) family function in tumor suppression and receptor clustering by forming multiprotein complexes containing distinct sets of transmembrane, cytoskeletal, and cytoplasmic signaling proteins. All MAGUKs contain a PDZ-SH3-GUK core and are divided into 4 subfamilies - DLG-like, ZO1-like, p55-like and LIN2-like - based on their size and the presence of additional domains [Tseng et al., 2001; PubMed 11311936].

Synonyms:

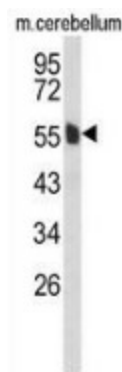
VAM1

Note:

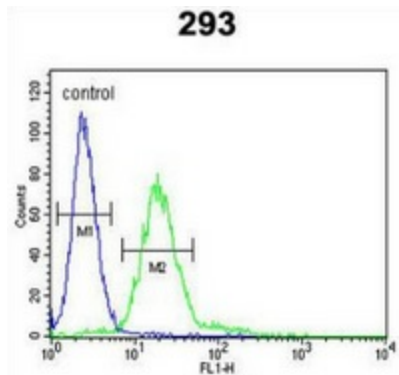
Molecular Weight: 61117 Da

Protein Families:

Druggable Genome, Stem cell - Pluripotency

Product images:


Western blot analysis of MPP6 (arrow) in mouse cerebellum tissue lysates (35ug/lane) using MPP6 antibody.



Flow cytometric analysis of 293 cells (right histogram) compared to a negative control cell (left histogram) using MPP6 antibody, followed by FITC-conjugated goat-anti-rabbit secondary antibodies.