

Product datasheet for **AP52739PU-N**

MPP3 (C-term) Rabbit Polyclonal Antibody

Product data:

Product Type:	Primary Antibodies
Applications:	WB
Recommended Dilution:	Western blot: 1/100-1/500. Enzyme immunoassay: 1/1000.
Reactivity:	Human
Host:	Rabbit
Isotype:	Ig
Clonality:	Polyclonal
Immunogen:	Synthetic peptide - KLH conjugated - corresponding to the C-terminal region (between 405-434aa) of human MPP3.
Specificity:	This antibody recognizes human MPP3 at C-term.
Formulation:	PBS with 0.09% (W/V) Sodium azide State: Aff - Purified State: Liquid purified Ig fraction
Concentration:	lot specific
Purification:	Purified through a Protein A column followed by peptide affinity purification
Conjugation:	Unconjugated
Storage:	Store undiluted at 2-8°C for one month or (in aliquots) at -20°C for longer. Avoid repeated freezing and thawing.
Stability:	Shelf life: one year from despatch.
Gene Name:	membrane palmitoylated protein 3
Database Link:	Entrez Gene 4356 Human Q13368



[View online »](#)

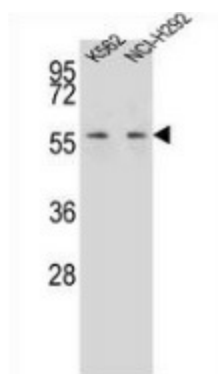
Background: The MPP3 gene product is a member of a family of membrane-associated proteins termed MAGUKs (membrane-associated guanylate kinase homologs). MAGUKs interact with the cytoskeleton and regulate cell proliferation, signaling pathways, and intracellular junctions. This protein contains a conserved sequence, called the SH3 (src homology 3) motif, found in several other proteins that associate with the cytoskeleton and are suspected to play important roles in signal transduction. Alternatively spliced transcript variants have been identified.

Synonyms: DLG3

Note: **Molecular Weight:** 66152 Da

Protein Families: Druggable Genome

Product images:



Western blot analysis in K562, NCI-H292 cell line lysates (35ug/lane) using MPP3 antibody. (C-term). This demonstrates this antibody detected the MPP3 protein (arrow).