

Product datasheet for **AP52738PU-N**

MPP1 (Center) Rabbit Polyclonal Antibody

Product data:

Product Type:	Primary Antibodies
Applications:	FC, IHC, WB
Recommended Dilution:	Flow cytometry: 1/10-1/50. Immunohistochemistry on Paraffin sections: 1/50-1/100. Western blot: 1/100-1/500. Enzyme immunoassay: 1/1000.
Reactivity:	Human
Host:	Rabbit
Isotype:	Ig
Clonality:	Polyclonal
Immunogen:	Synthetic peptide - KLH conjugated - corresponding to the central region (between 304-331aa) of human MPP1.
Specificity:	This antibody recognizes human MPP1.
Formulation:	PBS with 0.09% (W/V) Sodium azide State: Aff - Purified State: Liquid purified Ig fraction
Concentration:	lot specific
Purification:	Purified through a Protein A column followed by peptide affinity purification
Conjugation:	Unconjugated
Storage:	Store undiluted at 2-8°C for one month or (in aliquots) at -20°C for longer. Avoid repeated freezing and thawing.
Stability:	Shelf life: one year from despatch.
Gene Name:	membrane palmitoylated protein 1
Database Link:	Entrez Gene 4354 Human Q00013



[View online »](#)

Background:

This gene encodes the prototype of the membrane-associated guanylate kinase (MAGUK) family proteins. MAGUKs interact with the cytoskeleton and regulate cell proliferation, signaling pathways, and intercellular junctions. The encoded protein is an extensively palmitoylated membrane phosphoprotein containing a PDZ domain, a Src homology 3 (SH3) motif, and a guanylate kinase domain. This gene product interacts with various cytoskeletal proteins and cell junctional proteins in different tissue and cell types, and may be involved in the regulation of cell shape, hair cell development, neural patterning of the retina, and apico-basal polarity and tumor suppression pathways in non-erythroid cells. Multiple transcript variants encoding different isoforms have been found for this gene.

Synonyms:

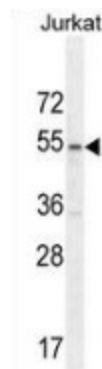
p55, DXS552E, EMP55

Note:

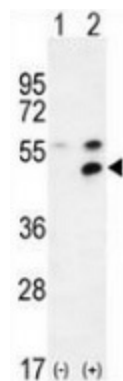
Molecular Weight: 52296 Da

Protein Families:

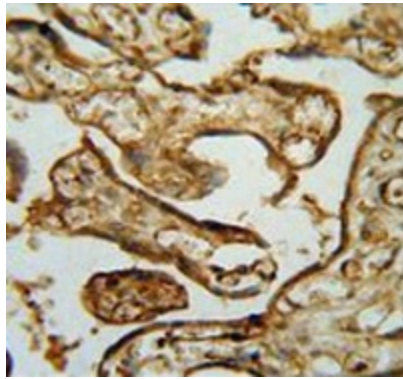
Druggable Genome

Product images:


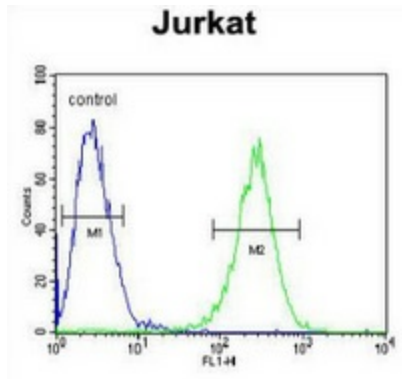
Western blot analysis in Jurkat cell line lysates (35ug/lane) using MPP1 antibody. This demonstrates this antibody detected the MPP1 protein (arrow).



Western blot analysis of MPP1 (arrow) with 293 cell lysates (2 ug/lane) either nontransfected (Lane 1) or transiently transfected (Lane 2) with the MPP1 gene using MPP1 antibody.



Immunohistochemistry analysis in human placenta tissue (Formalin-fixed, Paraffin-embedded) using MPP1 antibody., followed by peroxidase conjugated secondary antibody and DAB staining. This data demonstrates the use of this antibody for IHC. Clinical relevance has not been evaluated.



flow cytometric analysis of Jurkat cells (right histogram) compared to a negative control cell (left histogram) using MPP1 antibody., followed by FITC-conjugated goat-anti-rabbit secondary antibodies.