

Product datasheet for **AP52737PU-N**

Myeloperoxidase (MPO) (C-term) Rabbit Polyclonal Antibody

Product data:

Product Type:	Primary Antibodies
Applications:	WB
Recommended Dilution:	ELISA: 1/1000. Western Blot: 1/100-1/500.
Reactivity:	Human
Host:	Rabbit
Isotype:	Ig
Clonality:	Polyclonal
Immunogen:	KLH conjugated synthetic peptide between 547-575 amino acids from the C-terminal region of Human Myeloperoxidase.
Specificity:	This antibody recognizes Human Myeloperoxidase (C-term).
Formulation:	PBS containing 0.09% (W/V) Sodium Azide as preservative State: Aff - Purified State: Liquid purified Ig fraction
Concentration:	lot specific
Purification:	Protein A column, followed by peptide affinity purification
Conjugation:	Unconjugated
Storage:	Store undiluted at 2-8°C for one month or (in aliquots) at -20°C for longer. Avoid repeated freezing and thawing.
Stability:	Shelf life: one year from despatch.
Gene Name:	myeloperoxidase
Database Link:	Entrez Gene 4353 Human P05164



[View online »](#)

Background:

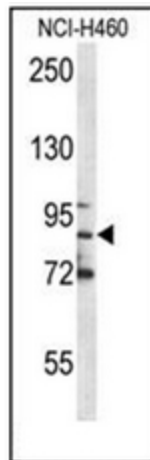
Myeloperoxidase (MPO) is a heme protein synthesized during myeloid differentiation that constitutes the major component of neutrophil azurophilic granules. Produced as a single chain precursor, myeloperoxidase is subsequently cleaved into a light and heavy chain. The mature myeloperoxidase is a tetramer composed of 2 light chains and 2 heavy chains. This enzyme produces hypohalous acids central to the microbicidal activity of neutrophils. [provided by RefSeq].

Synonyms:

MPO

Note:**Molecular Weight:** 83869 Da**Protein Families:**

Druggable Genome

Product images:

Western blot analysis of Myeloperoxidase Antibody (C-term) in NCI-H460 cell line lysates (35ug/lane). This demonstrates the MPO antibody detected the MPO protein (arrow).