

## Product datasheet for **AP52735PU-N**

### **MPP6 (MPHOSPH6) (N-term) Rabbit Polyclonal Antibody**

#### **Product data:**

Product Type:	Primary Antibodies
Applications:	WB
Recommended Dilution:	<b>ELISA:</b> 1/1000. <b>Western Blot:</b> 1/100-1/500.
Reactivity:	Human
Host:	Rabbit
Isotype:	Ig
Clonality:	Polyclonal
Immunogen:	KLH conjugated synthetic peptide between 1-30 amino acids from the N-terminal region of human MPHOSPH6
Specificity:	This antibody recognizes Human MPHOSPH6 (N-term).
Formulation:	PBS containing 0.09% (W/V) Sodium Azide as preservative State: Aff - Purified State: Liquid purified Ig fraction
Concentration:	lot specific
Purification:	Protein A column, followed by peptide affinity purification
Conjugation:	Unconjugated
Storage:	Store undiluted at 2-8°C for one month or (in aliquots) at -20°C for longer. Avoid repeated freezing and thawing.
Stability:	Shelf life: one year from despatch.
Gene Name:	M-phase phosphoprotein 6
Database Link:	<a href="#">Entrez Gene 10200 Human Q99547</a>



[View online »](#)

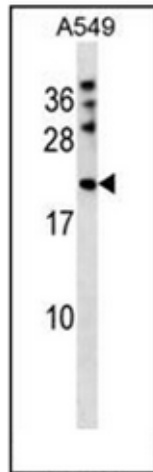
**Background:** Progression of cells from interphase to mitosis involves alterations in cell structures and activities. The transition from G2 to M phase is induced by M phase promoting factor, or MPF. In M phase, many proteins are phosphorylated directly by MPF or indirectly by kinases activated by MPF. These M phase phosphoproteins (MPPs, or MPHOSPHs) permit disassembly of interphase structures and generation of M phase enzymatic activities and structures.

**Synonyms:** MPP6, M-phase phosphoprotein 6

**Note:** **Molecular Weight:** 19024 Da

**Protein Pathways:** RNA degradation

**Product images:**



Western blot analysis of MPHOSPH6 Antibody (N-term) in A549 cell line lysates (35ug/lane). This demonstrates the MPHOSPH6 antibody detected the MPHOSPH6 protein (arrow).