

Product datasheet for **AP52732PU-N**

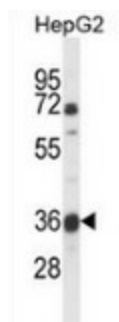
MOSC1 (MARC1) (Center) Rabbit Polyclonal Antibody

Product data:

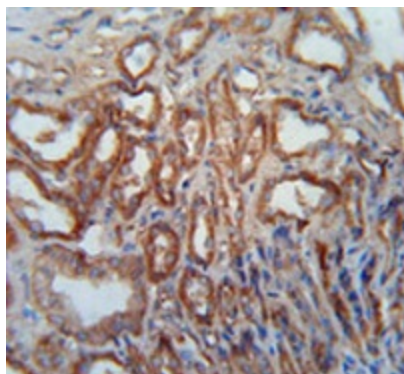
Product Type:	Primary Antibodies
Applications:	IHC, WB
Recommended Dilution:	Immunohistochemistry on Paraffin sections: 1/50-1/100. Western blot: 1/100-1/500. Enzyme immunoassay: 1/1000.
Reactivity:	Human
Host:	Rabbit
Isotype:	Ig
Clonality:	Polyclonal
Immunogen:	Synthetic peptide - KLH conjugated - corresponding to the central region (between 175-204 aa) of human MOSC1
Specificity:	This antibody recognizes human MOSC1.
Formulation:	PBS with 0.09% (W/V) Sodium azide State: Aff - Purified State: Liquid purified Ig fraction
Concentration:	lot specific
Purification:	Purified through a Protein A column followed by peptide affinity purification
Conjugation:	Unconjugated
Storage:	Store undiluted at 2-8°C for one month or (in aliquots) at -20°C for longer. Avoid repeated freezing and thawing.
Stability:	Shelf life: one year from despatch.
Gene Name:	mitochondrial amidoxime reducing component 1
Database Link:	Entrez Gene 64757 Human Q5VT66
Synonyms:	1300013F15Rik; Mosc1
Note:	Molecular Weight: 37499 Da
Protein Families:	Transmembrane



[View online »](#)

Product images:

Western blot analysis of MOSC1 (arrow) in HepG2 cell line lysates (35ug/lane) using MOSC1 antibody.



Immunohistochemistry analysis in human kidney tissue (Formalin-fixed, Paraffin-embedded) using MOSC1 antibody., followed by peroxidase conjugated secondary antibody and DAB staining. This data demonstrates the use of this antibody for immunohistochemistry. Clinical relevance has not been evaluated.