

Product datasheet for **AP52730PU-N**

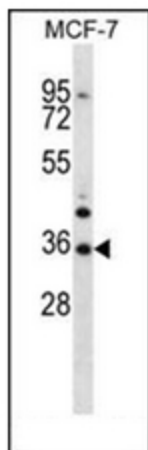
MORN3 (Center) Rabbit Polyclonal Antibody

Product data:

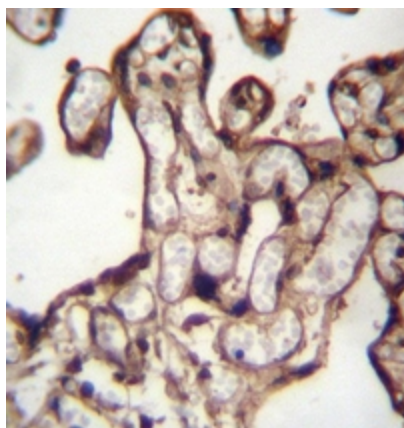
Product Type:	Primary Antibodies
Applications:	IHC, WB
Recommended Dilution:	ELISA: 1/1000. Western Blot: 1/100-1/500. Immunohistochemistry on Paraffin Sections: 1/10-1/50.
Reactivity:	Human
Host:	Rabbit
Isotype:	Ig
Clonality:	Polyclonal
Immunogen:	KLH conjugated synthetic peptide between 127-157 amino acids from the Central region of Human MORN3
Specificity:	This antibody recognizes Human MORN3 (Center).
Formulation:	PBS containing 0.09% (W/V) Sodium Azide as preservative State: Aff - Purified State: Liquid purified Ig fraction
Concentration:	lot specific
Purification:	Protein A column, followed by peptide affinity purification
Conjugation:	Unconjugated
Storage:	Store undiluted at 2-8°C for one month or (in aliquots) at -20°C for longer. Avoid repeated freezing and thawing.
Stability:	Shelf life: one year from despatch.
Gene Name:	MORN repeat containing 3
Database Link:	Entrez Gene 283385 Human Q6PF18
Synonyms:	MORN repeat-containing protein 3
Note:	Molecular Weight: 27585 Da
Protein Families:	Druggable Genome



[View online »](#)

Product images:

Western blot analysis of MORN3 Antibody (Center) in MCF-7 cell line lysates (35ug/lane). This demonstrates the MORN3 antibody detected the MORN3 protein (arrow).



Immunohistochemistry analysis in formalin fixed and paraffin embedded human placenta tissue reacted with MORN3 Antibody (Center) followed by peroxidase conjugation of the secondary antibody and DAB staining.