

## Product datasheet for **AP52728PU-N**

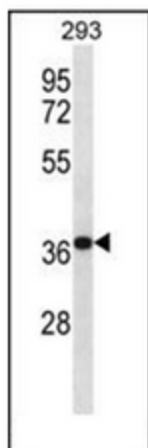
### Mortality Factor 4 like 2 (MORF4L2) (C-term) Rabbit Polyclonal Antibody

#### Product data:

Product Type:	Primary Antibodies
Applications:	WB
Recommended Dilution:	<b>ELISA:</b> 1/1000. <b>Western Blot:</b> 1/100-1/500.
Reactivity:	Human
Host:	Rabbit
Isotype:	Ig
Clonality:	Polyclonal
Immunogen:	KLH conjugated synthetic peptide between 258-288 amino acids from the C-terminal region of human MORF4L2
Specificity:	This antibody recognizes Human MORF4L2 (C-term).
Formulation:	PBS containing 0.09% (W/V) Sodium Azide as preservative State: Aff - Purified State: Liquid purified Ig fraction
Concentration:	lot specific
Purification:	Protein A column, followed by peptide affinity purification
Conjugation:	Unconjugated
Storage:	Store undiluted at 2-8°C for one month or (in aliquots) at -20°C for longer. Avoid repeated freezing and thawing.
Stability:	Shelf life: one year from despatch.
Gene Name:	mortality factor 4 like 2
Database Link:	<a href="#">Entrez Gene 9643 Human Q15014</a>
Synonyms:	Mortality factor 4-like protein 2, KIAA0026, MRGX
Note:	<b>Molecular Weight:</b> 32308 Da



[View online »](#)

**Product images:**

Western blot analysis of MORF4L2 Antibody (C-term) in 293 cell line lysates (35ug/lane). This demonstrates the MORF4L2 antibody detected the MORF4L2 protein (arrow).