

Product datasheet for **AP52721PU-N**

MOCS2 (N-term) Rabbit Polyclonal Antibody

Product data:

Product Type:	Primary Antibodies
Applications:	WB
Recommended Dilution:	ELISA: 1/1000. Western Blot: 1/100-1/500.
Reactivity:	Human
Host:	Rabbit
Isotype:	Ig
Clonality:	Polyclonal
Immunogen:	KLH conjugated synthetic peptide between 13-43 amino acids from the N-terminal region of human MOCS2
Specificity:	This antibody recognizes Human MOCS2 (N-term).
Formulation:	PBS containing 0.09% (W/V) Sodium Azide as preservative State: Aff - Purified State: Liquid purified Ig fraction
Concentration:	lot specific
Purification:	Protein A column, followed by peptide affinity purification
Conjugation:	Unconjugated
Storage:	Store undiluted at 2-8°C for one month or (in aliquots) at -20°C for longer. Avoid repeated freezing and thawing.
Stability:	Shelf life: one year from despatch.
Gene Name:	molybdenum cofactor synthesis 2
Database Link:	Entrez Gene 4338 Human O96033



[View online »](#)

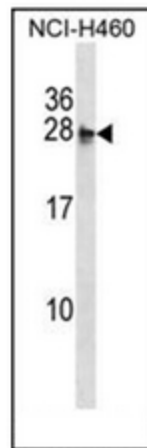
Background: Eukaryotic molybdoenzymes use a unique molybdenum cofactor (MoCo) consisting of a pterin, termed molybdopterin, and the catalytically active metal molybdenum. MoCo is synthesized from precursor Z by the heterodimeric enzyme molybdopterin synthase. The large and small subunits of molybdopterin synthase are both encoded from this gene by overlapping open reading frames. The proteins were initially thought to be encoded from a bicistronic transcript. They are now thought to be encoded from monocistronic transcripts. Alternatively spliced transcripts have been found for this locus that encode the large and small subunits.

Synonyms: Molybdopterin synthase catalytic subunit, MCBPE, MOCO1

Note: **Molecular Weight:** 20944 Da

Protein Families: Druggable Genome

Product images:



Western blot analysis of MOCS2 Antibody (N-term) in NCI-H460 cell line lysates (35ug/lane). This demonstrates the MOCS2 antibody detected the MOCS2 protein (arrow).