

## Product datasheet for **AP52720PU-N**

### MOCS1 (C-term) Rabbit Polyclonal Antibody

#### Product data:

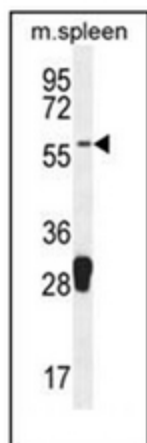
Product Type:	Primary Antibodies
Applications:	IHC, WB
Recommended Dilution:	<b>ELISA:</b> 1/1000. <b>Western Blot:</b> 1/100-1/500. <b>Immunohistochemistry on Paraffin Sections:</b> 1/50-1/100.
Reactivity:	Human, Mouse
Host:	Rabbit
Isotype:	Ig
Clonality:	Polyclonal
Immunogen:	KLH conjugated synthetic peptide between 452-482 amino acids from the C-terminal region of Human MOCS1
Specificity:	This antibody recognizes Human and Mouse MOCS1 (C-term).
Formulation:	PBS containing 0.09% (W/V) Sodium Azide as preservative State: Aff - Purified State: Liquid purified Ig fraction
Concentration:	lot specific
Purification:	Protein A column, followed by peptide affinity purification
Conjugation:	Unconjugated
Storage:	Store undiluted at 2-8°C for one month or (in aliquots) at -20°C for longer. Avoid repeated freezing and thawing.
Stability:	Shelf life: one year from despatch.
Gene Name:	molybdenum cofactor synthesis 1
Database Link:	<a href="#">Entrez Gene 4337 Human Q9NZB8</a>
Background:	MONDOA forms heterodimers with MLX (MIM 602976) that can bind to and activate transcription from CACGTG E boxes (Billin et al., 2000 [PubMed 11073985]).
Synonyms:	KIAA0381; MIG11; MOCOD; MOCS1A; MOCS1B



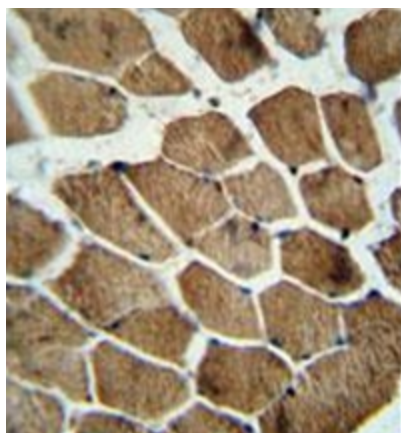
[View online »](#)

Note: **Molecular Weight:** 101185 Da

**Product images:**



Western blot analysis of MOCS1 Antibody (C-term) in mouse spleen tissue lysates (35ug/lane). This demonstrates the MOCS1 antibody detected the MOCS1 protein (arrow).



Immunohistochemistry analysis in formalin fixed and paraffin embedded human skeletal muscle reacted with MOCS1 Antibody (C-term) followed by peroxidase conjugation of the secondary antibody and DAB staining.