

## Product datasheet for **AP52718PU-N**

### **MOBK1B (MOB1A) (N-term) Rabbit Polyclonal Antibody**

#### **Product data:**

|                       |  |
|-----------------------|--|
| Product Type:         | Primary Antibodies   |
| Applications:         | FC, WB   |
| Recommended Dilution: | <b>ELISA:</b> 1/1000.<br><b>Western Blot:</b> 1/100-1/500.<br><b>Flow Cytometry:</b> 1/10-1/50.                      |
| Reactivity:           | Human  |
| Host:                 | Rabbit   |
| Isotype:              | Ig   |
| Clonality:            | Polyclonal   |
| Immunogen:            | KLH conjugated synthetic peptide between 4-33 amino acids from the N-terminal region of Human MOBKL1B                |
| Specificity:          | This antibody recognizes Human MOBKL1B (N-term).   |
| Formulation:          | PBS containing 0.09% (W/V) Sodium Azide as preservative<br>State: Purified<br>State: Liquid purified Ig fraction     |
| Concentration:        | lot specific   |
| Purification:         | Saturated Ammonium Sulfate (SAS) precipitation followed by dialysis against PBS                                      |
| Conjugation:          | Unconjugated   |
| Storage:              | Store undiluted at 2-8°C for one month or (in aliquots) at -20°C for longer.<br>Avoid repeated freezing and thawing. |
| Stability:            | Shelf life: one year from despatch.  |
| Gene Name:            | MOB kinase activator 1A  |
| Database Link:        | <a href="#">Entrez Gene 55233 Human Q9H8S9</a>   |



[View online »](#)

**Background:**

Activator of LATS1/2 in the Hippo signaling pathway which plays a pivotal role in organ size control and tumor suppression by restricting proliferation and promoting apoptosis. The core of this pathway is composed of a kinase cascade wherein MST1/MST2, in complex with its regulatory protein SAV1, phosphorylates and activates LATS1/2 in complex with its regulatory protein MOB1, which in turn phosphorylates and inactivates YAP1 oncoprotein and WWTR1/TAZ. Phosphorylation of YAP1 by LATS1/2 inhibits its translocation into the nucleus to regulate cellular genes important for cell proliferation, cell death, and cell migration. Stimulates the kinase activity of STK38 and STK38L.

**Synonyms:**

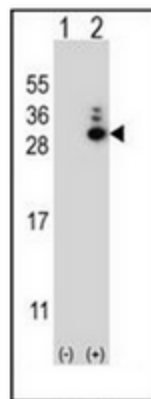
Mob1 homolog 1B, Mob1 alpha, Protein Mob4B, C2orf6, MOB4B, MOBK1B

**Note:**

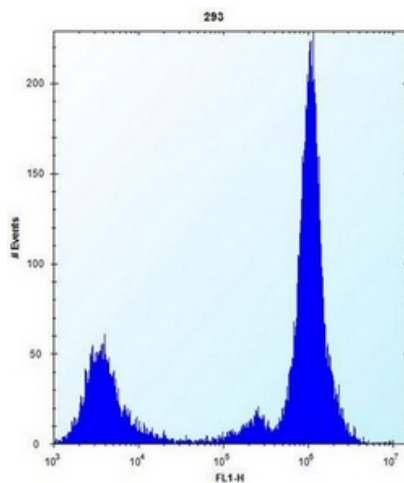
**Molecular Weight:** 25080 Da

**Protein Families:**

Druggable Genome

**Product images:**


Western blot analysis of MOBKL1B (arrow) using MOBKL1B Antibody (N-term). 293 cell lysates (2 ug/lane) either nontransfected (Lane 1) or transiently transfected (Lane 2) with the MOBKL1B gene.



Flow cytometric analysis of 293 cells using MOBKL1B Antibody (N-term) (right histogram) compared to a negative control cell (left histogram). FITC-conjugated goat-anti-rabbit secondary antibodies were used for the analysis.