

## Product datasheet for **AP52717PU-N**

### **MNX1 (Center) Rabbit Polyclonal Antibody**

#### **Product data:**

Product Type:	Primary Antibodies
Applications:	WB
Recommended Dilution:	<b>ELISA:</b> 1/1000. <b>Western Blot:</b> 1/100-1/500.
Reactivity:	Human, Mouse
Host:	Rabbit
Isotype:	Ig
Clonality:	Polyclonal
Immunogen:	KLH conjugated synthetic peptide between 241-271 amino acids from the Central region of human MNX1
Specificity:	This antibody recognizes Human and Mouse MNX1 (Center).
Formulation:	PBS containing 0.09% (W/V) Sodium Azide as preservative State: Aff - Purified State: Liquid purified Ig fraction
Concentration:	lot specific
Purification:	Protein A column, followed by peptide affinity purification
Conjugation:	Unconjugated
Storage:	Store undiluted at 2-8°C for one month or (in aliquots) at -20°C for longer. Avoid repeated freezing and thawing.
Stability:	Shelf life: one year from despatch.
Gene Name:	motor neuron and pancreas homeobox 1
Database Link:	<a href="#">Entrez Gene 15285 Mouse</a> <a href="#">Entrez Gene 3110 Human</a> <a href="#">P50219</a>
Background:	This gene encodes a nuclear protein, which contains a homeobox domain and is a transcription factor. Mutations in this gene result in Currarino syndrome, an autosomic dominant congenital malformation. Alternatively spliced transcript variants encoding different isoforms have been found for this gene. [provided by RefSeq].
Synonyms:	HLXB9, Homeobox protein HB9



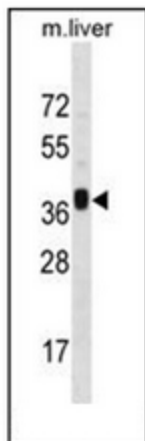
[View online »](#)

Note: **Molecular Weight:** 40569 Da

Protein Families: Druggable Genome, ES Cell Differentiation/IPS

Protein Pathways: Maturity onset diabetes of the young

### Product images:



Western blot analysis of MNX1 Antibody (Center) in mouse liver tissue lysates (35ug/lane). This demonstrates the MNX1 antibody detected the MNX1 protein (arrow).