

Product datasheet for **AP52714PU-N**

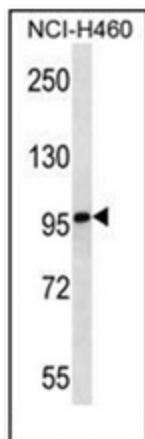
Multimerin 2 (MMRN2) (C-term) Rabbit Polyclonal Antibody

Product data:

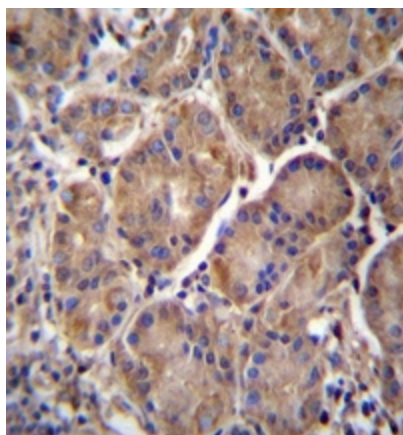
Product Type:	Primary Antibodies
Applications:	IHC, WB
Recommended Dilution:	ELISA: 1/1000. Western Blot: 1/100-1/500. Immunohistochemistry on Paraffin Sections: 1/10-1/50.
Reactivity:	Human
Host:	Rabbit
Isotype:	Ig
Clonality:	Polyclonal
Immunogen:	KLH conjugated synthetic peptide between 767-797 amino acids from the C-terminal region of Human Multimerin-2
Specificity:	This antibody recognizes Human Multimerin-2 (C-term).
Formulation:	PBS containing 0.09% (W/V) Sodium Azide as preservative State: Aff - Purified State: Liquid purified Ig fraction
Concentration:	lot specific
Purification:	Protein A column, followed by peptide affinity purification
Conjugation:	Unconjugated
Storage:	Store undiluted at 2-8°C for one month or (in aliquots) at -20°C for longer. Avoid repeated freezing and thawing.
Stability:	Shelf life: one year from despatch.
Gene Name:	multimerin 2
Database Link:	Entrez Gene 79812 Human Q9H8L6
Synonyms:	EMILIN-3, EndoGlyx-1 p125/p140 subunit, MMRN2, EMILIN3, Elastin microfibril interfacier 3
Note:	Molecular Weight: 104409 Da
Protein Families:	Secreted Protein



[View online »](#)

Product images:

Western blot analysis of Multimerin-2 Antibody (C-term) in NCI-H460 cell line lysates (35ug/lane). This demonstrates the MMRN2 antibody detected the MMRN2 protein (arrow).



Immunohistochemistry analysis in formalin fixed and paraffin embedded human stomach tissue reacted with Multimerin-2 Antibody (C-term) followed by peroxidase conjugation of the secondary antibody and DAB staining.