

Product datasheet for **AP52713PU-N**

MMP9 (C-term) Rabbit Polyclonal Antibody

Product data:

Product Type:	Primary Antibodies
Applications:	WB
Recommended Dilution:	ELISA: 1/1000. Western Blot: 1/100-1/500.
Reactivity:	Human
Host:	Rabbit
Isotype:	Ig
Clonality:	Polyclonal
Immunogen:	KLH conjugated synthetic peptide between 548-578 amino acids from the C-terminal region of Human MMP-9
Specificity:	This antibody recognizes Human MMP-9 (C-term).
Formulation:	PBS containing 0.09% (W/V) Sodium Azide as preservative State: Aff - Purified State: Liquid purified Ig fraction
Concentration:	lot specific
Purification:	Protein A column, followed by peptide affinity purification
Conjugation:	Unconjugated
Storage:	Store undiluted at 2-8°C for one month or (in aliquots) at -20°C for longer. Avoid repeated freezing and thawing.
Stability:	Shelf life: one year from despatch.
Gene Name:	matrix metalloproteinase 9
Database Link:	Entrez Gene 4318 Human P14780



[View online »](#)

Background:

Proteins of the matrix metalloproteinase (MMP) family are involved in the breakdown of extracellular matrix in normal physiological processes, such as embryonic development, reproduction, and tissue remodeling, as well as in disease processes, such as arthritis and metastasis. Most MMP's are secreted as inactive proproteins which are activated when cleaved by extracellular proteinases. The enzyme encoded by this gene degrades type IV and V collagens. Studies in rhesus monkeys suggest that the enzyme is involved in IL-8-induced mobilization of hematopoietic progenitor cells from bone marrow, and murine studies suggest a role in tumor-associated tissue remodeling. [provided by RefSeq].

Synonyms:

Matrix metalloproteinase-9, MMP9, 92 kDa type IV collagenase, 92 kDa gelatinase, GELB, Gelatinase B, CLG4B

Note:

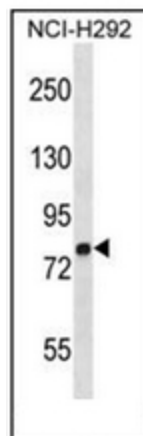
Molecular Weight: 78458 Da

Protein Families:

Druggable Genome, Protease

Protein Pathways:

Bladder cancer, Leukocyte transendothelial migration, Pathways in cancer

Product images:

Western blot analysis of MMP9 Antibody (C-term) in NCI-H292 cell line lysates (35ug/lane). This demonstrates the MMP9 antibody detected the MMP9 protein (arrow).