

Product datasheet for **AP52708PU-N**

MLX interacting protein (MLXIP) (N-term) Rabbit Polyclonal Antibody

Product data:

Product Type:	Primary Antibodies
Applications:	IHC, WB
Recommended Dilution:	ELISA: 1/1000. Western Blot: 1/100-1/500. Immunohistochemistry on Paraffin Sections: 1/50-1/100.
Reactivity:	Human, Mouse
Host:	Rabbit
Isotype:	Ig
Clonality:	Polyclonal
Immunogen:	KLH conjugated synthetic peptide between 79-108 amino acids from the N-terminal region of human MLXIP
Specificity:	This antibody recognizes Human and Mouse MLX-interacting protein (N-term).
Formulation:	PBS containing 0.09% (W/V) Sodium Azide as preservative State: Aff - Purified State: Liquid purified Ig fraction
Concentration:	lot specific
Purification:	Protein A column, followed by peptide affinity purification
Conjugation:	Unconjugated
Storage:	Store undiluted at 2-8°C for one month or (in aliquots) at -20°C for longer. Avoid repeated freezing and thawing.
Stability:	Shelf life: one year from despatch.
Gene Name:	MLX interacting protein
Database Link:	Entrez Gene 208104 Mouse Entrez Gene 22877 Human Q9HAP2
Background:	MONDOA forms heterodimers with MLX (MIM 602976) that can bind to and activate transcription from CACGTG E boxes (Billin et al., 2000 [PubMed 11073985]).
Synonyms:	MLXIP, KIAA0867, MIR

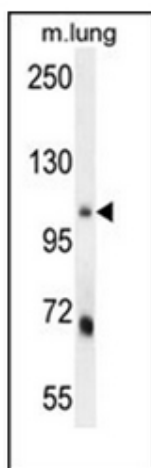


[View online »](#)

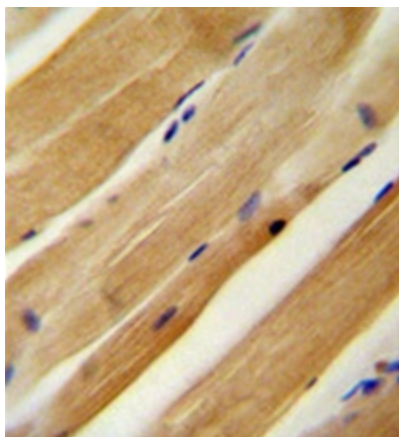
Note: **Molecular Weight:** 101185 Da

Protein Families: Transcription Factors

Product images:



Western blot analysis of MLXIP Antibody (N-term) in mouse lung tissue lysates (35ug/lane). This demonstrates the MLXIP antibody detected the MLXIP protein (arrow).



Immunohistochemistry analysis in formalin fixed and paraffin embedded human skeletal muscle reacted with MLXIP Antibody (N-term) followed by peroxidase conjugation of the secondary antibody and DAB staining.