

Product datasheet for **AP52706PU-N**

Melanophilin (MLPH) (C-term) Rabbit Polyclonal Antibody

Product data:

Product Type:	Primary Antibodies
Applications:	IHC, WB
Recommended Dilution:	Immunohistochemistry on Paraffin sections: 1/10-1/50. Western blot: 1/100-1/500. Enzyme immunoassay: 1/1000.
Reactivity:	Human
Host:	Rabbit
Isotype:	Ig
Clonality:	Polyclonal
Immunogen:	Synthetic peptide - KLH conjugated - corresponding to the C-terminal region (between 540-569aa) of human Melanophilin.
Specificity:	This antibody recognizes Melanophilin / MLPH at C-term.
Formulation:	PBS with 0.09% (W/V) Sodium azide State: Aff - Purified State: Liquid purified Ig fraction
Concentration:	lot specific
Purification:	Purified through a Protein A column followed by peptide affinity purification
Conjugation:	Unconjugated
Storage:	Store undiluted at 2-8°C for one month or (in aliquots) at -20°C for longer. Avoid repeated freezing and thawing.
Stability:	Shelf life: one year from despatch.
Gene Name:	melanophilin
Database Link:	Entrez Gene 79083 Human Q9BV36



[View online »](#)

Background:

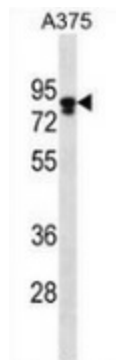
The MLPH gene encodes a member of the exophilin subfamily of Rab effector proteins, Melanophilin. The protein forms a ternary complex with the small Ras-related GTPase Rab27A in its GTP-bound form and the motor protein myosin Va. A similar protein complex in mouse functions to tether pigment-producing organelles called melanosomes to the actin cytoskeleton in melanocytes, and is required for visible pigmentation in the hair and skin. A mutation in this gene results in Griscelli syndrome type 3, which is characterized by a silver-gray hair color and abnormal pigment distribution in the hair shaft. Several alternatively spliced transcript variants of this gene have been described, but the full-length nature of some of these variants has not been determined.

Synonyms:

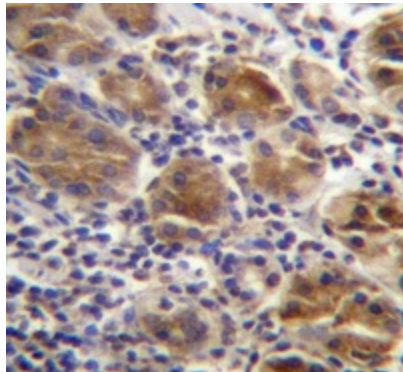
Mlph, Ln, Slac2a, Exophilin-3, Leaden protein, Synaptotagmin-like protein 2a

Note:

Molecular Weight: 65949 Da

Product images:

Western blot analysis in A375 cell line lysates (35ug/lane) using Melanophilin / MLPH antibody. (C-term). This demonstrates the MLPH antibody detected the MLPH protein (arrow).



Immunohistochemistry analysis in human stomach tissue (Formalin-fixed, Paraffin-embedded) using Melanophilin / MLPH antibody. (C-term), followed by peroxidase conjugation of the secondary antibody and DAB staining. This data demonstrates the use of MLPH antibody for IHC; Clinical relevance has not been evaluated.