

## Product datasheet for **AP52703PU-N**

### MRTFB (N-term) Rabbit Polyclonal Antibody

#### Product data:

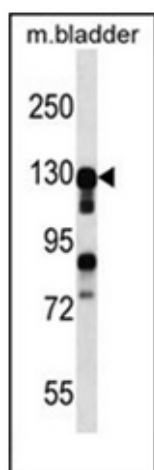
Product Type:	Primary Antibodies
Applications:	WB
Recommended Dilution:	<b>ELISA:</b> 1/1000. <b>Western Blot:</b> 1/100-1/500.
Reactivity:	Human, Mouse
Host:	Rabbit
Isotype:	Ig
Clonality:	Polyclonal
Immunogen:	KLH conjugated synthetic peptide between 82-112 amino acids from the N-terminal region of human MKL2
Specificity:	This antibody recognizes Human and Mouse MKL2 (N-term).
Formulation:	PBS containing 0.09% (W/V) Sodium Azide as preservative State: Aff - Purified State: Liquid purified Ig fraction
Concentration:	lot specific
Purification:	Protein A column, followed by peptide affinity purification
Conjugation:	Unconjugated
Storage:	Store undiluted at 2-8°C for one month or (in aliquots) at -20°C for longer. Avoid repeated freezing and thawing.
Stability:	Shelf life: one year from despatch.
Gene Name:	MKL1/myocardin like 2
Database Link:	<a href="#">Entrez Gene 57496 Human Q9ULH7</a>
Background:	MKL2 acts as a transcriptional coactivator of serum response factor (SRF). Required for skeletal myogenic differentiation.
Synonyms:	KIAA1243, MRTFB, MRTF-B
Note:	<b>Molecular Weight:</b> 118127 Da



[View online »](#)

Protein Families: Transcription Factors

### Product images:



Western blot analysis of MKL2 Antibody (N-term) in mouse bladder tissue lysates (35ug/lane). This demonstrates the MKL2 antibody detected the MKL2 protein (arrow).