

## Product datasheet for **AP52702PU-N**

### **MKKS (C-term) Rabbit Polyclonal Antibody**

#### **Product data:**

Product Type:	Primary Antibodies
Applications:	WB
Recommended Dilution:	<b>ELISA:</b> 1/1000. <b>Western Blot:</b> 1/100-1/500.
Reactivity:	Human
Host:	Rabbit
Isotype:	Ig
Clonality:	Polyclonal
Immunogen:	KLH conjugated synthetic peptide between 407-438 amino acids from the C-terminal region of human MKKS
Specificity:	This antibody recognizes Human MKKS (C-term).
Formulation:	PBS containing 0.09% (W/V) Sodium Azide as preservative State: Aff - Purified State: Liquid purified Ig fraction
Concentration:	lot specific
Purification:	Protein A column, followed by peptide affinity purification
Conjugation:	Unconjugated
Storage:	Store undiluted at 2-8°C for one month or (in aliquots) at -20°C for longer. Avoid repeated freezing and thawing.
Stability:	Shelf life: one year from despatch.
Gene Name:	McKusick-Kaufman syndrome
Database Link:	<a href="#">Entrez Gene 8195 Human Q9NPJ1</a>
Background:	MKKS is a protein with sequence similarity to the chaperonin family. The encoded protein may have a role in protein processing in limb, cardiac and reproductive system development. Mutations in this gene have been observed in patients with Bardet-Biedl syndrome type 6 and McKusick-Kaufman syndrome. Two transcript variants encoding the same protein have been identified for this gene.

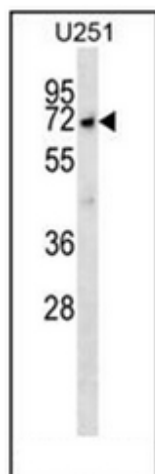


[View online »](#)

**Synonyms:** Bardet-Biedl syndrome 6 protein, BBS6

**Note:** **Molecular Weight:** 62342 Da

**Product images:**



Western blot analysis of MKKS Antibody (C-term) in U251 cell line lysates (35ug/lane). This demonstrates the MKKS antibody detected the MKKS protein (arrow).