

Product datasheet for **AP52701PU-N**

MITF (N-term) Rabbit Polyclonal Antibody

Product data:

Product Type:	Primary Antibodies
Applications:	FC, IF, WB
Recommended Dilution:	ELISA: 1/1000. Western Blot: 1/100-1/500. Flow Cytometry: 1/10-1/50. Immunofluorescence: 1/10-1/50.
Reactivity:	Human
Host:	Rabbit
Isotype:	Ig
Clonality:	Polyclonal
Immunogen:	KLH conjugated synthetic peptide between 8-36 amino acids from the N-terminal region of Human MITF.
Specificity:	This antibody recognizes Human MITF (N-term).
Formulation:	PBS containing 0.09% (W/V) Sodium Azide as preservative State: Aff - Purified State: Liquid purified Ig fraction
Concentration:	lot specific
Purification:	Protein A column, followed by peptide affinity purification
Conjugation:	Unconjugated
Storage:	Store undiluted at 2-8°C for one month or (in aliquots) at -20°C for longer. Avoid repeated freezing and thawing.
Stability:	Shelf life: one year from despatch.
Gene Name:	melanogenesis associated transcription factor
Database Link:	Entrez Gene 4286 Human O75030



[View online »](#)

Background: This gene encodes a transcription factor that contains both basic helix-loop-helix and leucine zipper structural features. It regulates the differentiation and development of melanocytes retinal pigment epithelium and is also responsible for pigment cell-specific transcription of the melanogenesis enzyme genes. Heterozygous mutations in the this gene cause auditory-pigmentary syndromes, such as Waardenburg syndrome type 2 and Tietz syndrome. Alternatively spliced transcript variants encoding different isoforms have been identified.

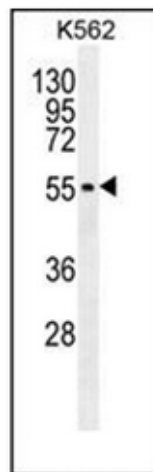
Synonyms: Microphthalmia-associated transcription factor, Mi-protein

Note: **Molecular Weight:** 58795 Da

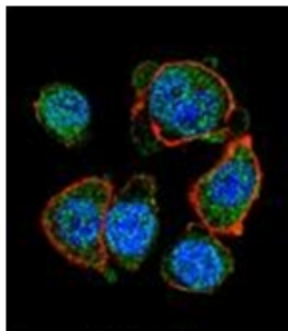
Protein Families: Druggable Genome, Transcription Factors

Protein Pathways: Melanogenesis, Melanoma, Pathways in cancer

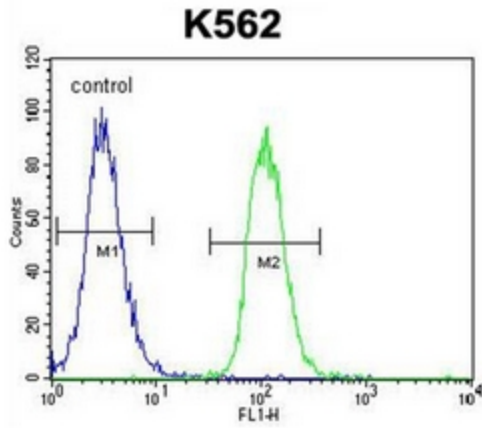
Product images:



Western blot analysis of MITF Antibody (N-term) in K562 cell line lysates (35ug/lane). This demonstrates the MITF antibody detected the MITF protein (arrow).



Confocal immunofluorescent analysis of MITF Antibody (N-term) with hela cell followed by Alexa Fluor 488-conjugated goat anti-rabbit IgG (green). Actin filaments have been labeled with Alexa Fluor 555 phalloidin (red). DAPI was used to stain the cell nuclear (blue).



Flow cytometric analysis of K562 cells using MITF Antibody (N-term) (right histogram) compared to a negative control cell (left histogram). FITC-conjugated goat-anti-rabbit secondary antibodies were used for the analysis.