

## Product datasheet for **AP52700PU-N**

### **MINPP1 (N-term) Rabbit Polyclonal Antibody**

#### **Product data:**

Product Type:	Primary Antibodies
Applications:	FC, IHC, WB
Recommended Dilution:	<b>ELISA:</b> 1/1000. <b>Western Blot:</b> 1/100-1/500. <b>Flow Cytometry:</b> 1/10-1/50. <b>Immunohistochemistry on Paraffin Sections:</b> 1/50-1/100.
Reactivity:	Human
Host:	Rabbit
Isotype:	Ig
Clonality:	Polyclonal
Immunogen:	KLH conjugated synthetic peptide between 35-63 amino acids from the N-terminal region of Human MINPP1
Specificity:	This antibody recognizes Human MINPP1 (N-term).
Formulation:	PBS containing 0.09% (W/V) Sodium Azide as preservative State: Aff - Purified State: Liquid purified Ig fraction
Concentration:	lot specific
Purification:	Protein A column, followed by peptide affinity purification
Conjugation:	Unconjugated
Storage:	Store undiluted at 2-8°C for one month or (in aliquots) at -20°C for longer. Avoid repeated freezing and thawing.
Stability:	Shelf life: one year from despatch.
Gene Name:	multiple inositol-polyphosphate phosphatase 1
Database Link:	<a href="#">Entrez Gene 9562 Human Q9UNW1</a>



[View online »](#)

**Background:**

This gene encodes multiple inositol polyphosphate phosphatase; an enzyme that removes 3-phosphate from inositol phosphate substrates. It is the only enzyme known to hydrolyze inositol pentakisphosphate and inositol hexakisphosphate. This enzyme also converts 2,3 bisphosphoglycerate (2,3-BPG) to 2-phosphoglycerate; an activity formerly thought to be exclusive to 2,3-BPG synthase/2-phosphatase (BPGM) in the Rapoport-Luebering shunt of the glycolytic pathway.

**Synonyms:**

Multiple inositol polyphosphate phosphatase 1, MIPP, UNQ900/PRO1917

**Note:**

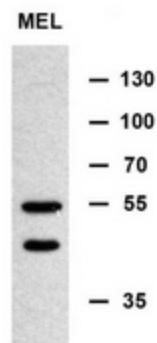
**Molecular Weight:** 55051 Da

**Protein Families:**

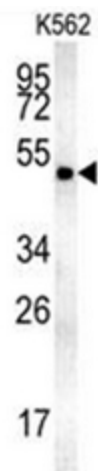
Druggable Genome

**Protein Pathways:**

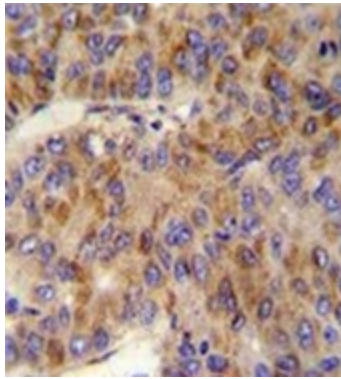
Inositol phosphate metabolism

**Product images:**

Western blot analysis of MINPP1 Antibody (N-term) in murine erythroleukemia cell line lysates (35ug/lane). This demonstrates the MINPP1 antibody detected the MINPP1 protein (arrow). (Kindly offered by Doc. Norma).

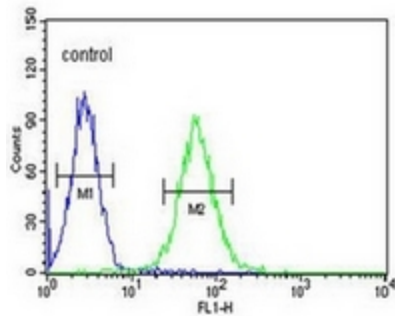


Western blot analysis of MINPP1 Antibody (N-term) in K562 cell line lysates (35ug/lane). This demonstrates the MINPP1 antibody detected the MINPP1 protein (arrow).



Immunohistochemistry analysis in formalin fixed and paraffin embedded human hepatocarcinoma reacted with bMINPP1 Antibody (N-term) followed by peroxidase conjugation of the secondary antibody and DAB staining.

**K562**



Flow cytometric analysis of K562 cells using MINPP1 Antibody (N-term) (right histogram) compared to a negative control cell (left histogram). FITC-conjugated goat-anti-rabbit secondary antibodies were used for the analysis.