

Product datasheet for **AP52699PU-N**

MINPP1 (C-term) Rabbit Polyclonal Antibody

Product data:

Product Type:	Primary Antibodies
Applications:	FC, WB
Recommended Dilution:	ELISA: 1/1000. Western Blot: 1/100-1/500. Flow Cytometry: 1/10-1/50.
Reactivity:	Human
Host:	Rabbit
Isotype:	Ig
Clonality:	Polyclonal
Immunogen:	KLH conjugated synthetic peptide between 369-348 amino acids from the C-terminal region of Human MINPP1.
Specificity:	This antibody recognizes Human MINPP1 (C-term).
Formulation:	PBS containing 0.09% (W/V) Sodium Azide as preservative State: Aff - Purified State: Liquid purified Ig fraction
Concentration:	lot specific
Purification:	Protein A column, followed by peptide affinity purification
Conjugation:	Unconjugated
Storage:	Store undiluted at 2-8°C for one month or (in aliquots) at -20°C for longer. Avoid repeated freezing and thawing.
Stability:	Shelf life: one year from despatch.
Gene Name:	multiple inositol-polyphosphate phosphatase 1
Database Link:	Entrez Gene 9562 Human Q9UNW1



[View online »](#)

Background:

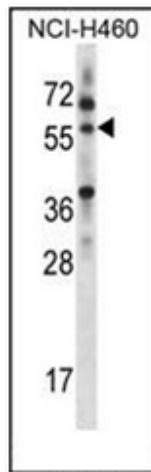
This gene encodes multiple inositol polyphosphate phosphatase; an enzyme that removes 3-phosphate from inositol phosphate substrates. It is the only enzyme known to hydrolyze inositol pentakisphosphate and inositol hexakisphosphate. This enzyme also converts 2,3-bisphosphoglycerate (2,3-BPG) to 2-phosphoglycerate; an activity formerly thought to be exclusive to 2,3-BPG synthase/2-phosphatase (BPGM) in the Rapoport-Luebering shunt of the glycolytic pathway.

Synonyms:

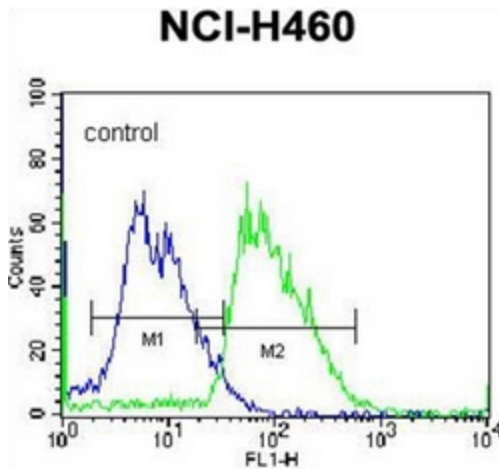
Multiple inositol polyphosphate phosphatase 1, MIPP, UNQ900/PRO1917

Note:

Molecular Weight: 55051 Da

Product images:


Western blot analysis of MINPP1 Antibody (C-term) in NCI-H460 cell line lysates (35ug/lane). This demonstrates the MINPP1 antibody detected the MINPP1 protein (arrow).



Flow cytometric analysis of NCI-H460 cells using MINPP1 Antibody (C-term) (right histogram) compared to a negative control cell (left histogram). FITC-conjugated donkey-anti-rabbit secondary antibodies were used for the analysis.