

Product datasheet for **AP52698PU-N**

MINA53 (MINA) (N-term) Rabbit Polyclonal Antibody

Product data:

Product Type:	Primary Antibodies
Applications:	WB
Recommended Dilution:	ELISA: 1/1000. Western blot: 1/50 - 1/100.
Reactivity:	Human
Host:	Rabbit
Isotype:	Ig
Clonality:	Polyclonal
Immunogen:	KLH conjugated synthetic peptide between 1-30 amino acids from the N-terminal region of human MINA
Specificity:	This antibody reacts to MINA.
Formulation:	PBS State: Purified State: Liquid purified Ig fraction Preservative: 0.09% (W/V) sodium azide
Concentration:	lot specific
Purification:	Saturated Ammonium Sulfate (SAS) precipitation
Conjugation:	Unconjugated
Storage:	Store undiluted at 2-8°C for one month or (in aliquots) at -20°C for longer. Avoid repeated freezing and thawing.
Stability:	Shelf life: one year from despatch.
Predicted Protein Size:	52800 Da
Gene Name:	MYC induced nuclear antigen
Database Link:	Entrez Gene 84864 Human Q8IUF8
Background:	MINA is a c-Myc (MYC; MIM 190080) target gene that may play a role in cell proliferation or regulation of cell growth. (Tsuneoka et al., 2002 [PubMed 12091391]; Zhang et al., 2005 [PubMed 15897898]).

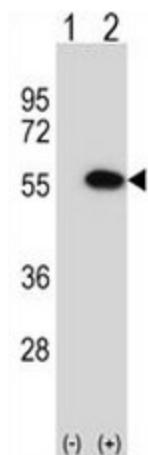


[View online »](#)

Synonyms: Mineral dust-induced gene protein, Nucleolar protein 52, MINA, MDIG, MINA53, NO52

Protein Families: Druggable Genome

Product images:



Western blot analysis of MINA (arrow) using rabbit polyclonal MINA Antibody (N-term). 293 cell lysates (2 ug/lane) either nontransfected (Lane 1) or transiently transfected (Lane 2) with the MINA gene.