

Product datasheet for **AP52697PU-N**

MIER2 (N-term) Rabbit Polyclonal Antibody

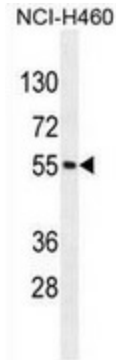
Product data:

Product Type:	Primary Antibodies
Applications:	FC, WB
Recommended Dilution:	This antibody is suitable for flow cytometry and Western blotting. The suggested dilution is: Flow cytometry: 1/10-1/50. Western blotting: 1/100-1/500.
Reactivity:	Human
Host:	Rabbit
Isotype:	Ig
Clonality:	Polyclonal
Immunogen:	Synthetic peptide - KLH conjugated - corresponding to the N-terminal region (between 86-115aa) of human MIER2.
Specificity:	This antibody detects human MIER2 at N-term.
Formulation:	PBS with 0.09% (W/V) Sodium Azide. State: Aff - Purified State: Liquid purified Ig fraction
Concentration:	lot specific
Purification:	Purified through a protein A column; followed by peptide affinity purification.
Conjugation:	Unconjugated
Storage:	Store the antibody undiluted at 2-8°C for one month or (in aliquots) at -20°C for longer. Avoid repeated freezing and thawing.
Stability:	Shelf life: one year from despatch.
Gene Name:	MIER family member 2
Database Link:	Entrez Gene 54531 Human Q8N344
Synonyms:	KIAA1193, Mi-er2, Mesoderm induction early response protein 2
Note:	Molecular Weight: 59944 Da

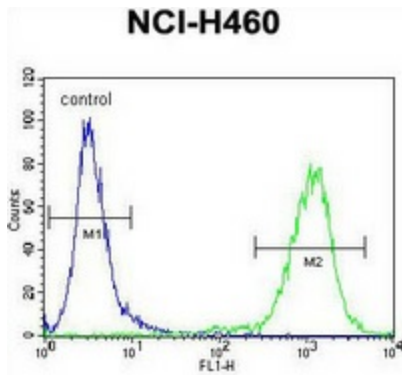


[View online »](#)

Product images:



Western blot analysis in NCI-H460 cell line lysates (35ug/lane) using MIER2 antibody. (N-term). This demonstrates the MIER2 antibody detected the MIER2 protein (arrow).



Flow cytometric analysis of NCI-H460 cells (right histogram) compared to a negative control cell (left histogram) using MIER2 antibody. (N-term), followed by FITC-conjugated goat-anti-rabbit secondary antibodies.