

Product datasheet for **AP52696PU-N**

MID1IP1 (N-term) Rabbit Polyclonal Antibody

Product data:

Product Type:	Primary Antibodies
Applications:	FC, IHC, WB
Recommended Dilution:	This antibody is suitable for immunohistochemistry on paraffin sections and Western blotting. The suggested dilution is: Immunohistochemistry on paraffin sections 1/10-1/50. Western blotting: 1/50-1/100.
Reactivity:	Human
Host:	Rabbit
Isotype:	Ig
Clonality:	Polyclonal
Immunogen:	Synthetic peptide - KLH conjugated - corresponding to N-terminal region of human Mid1-interacting protein 1.
Specificity:	This antibody detects human Mid1-interacting protein 1.
Formulation:	PBS with 0.09% (W/V) Sodium Azide. State: Purified State: Liquid purified Ig fraction
Concentration:	lot specific
Purification:	Prepared by Saturated Ammonium Sulfate (SAS) precipitation followed by dialysis against PBS.
Conjugation:	Unconjugated
Storage:	Store the antibody undiluted at 2-8°C for one month or (in aliquots) at -20°C for longer. Avoid repeated freezing and thawing.
Stability:	Shelf life: one year from despatch.
Gene Name:	MID1 interacting protein 1
Database Link:	Entrez Gene 58526 Human Q9NPA3
Background:	MID1IP1 is involved in stabilization of microtubules (By similarity).

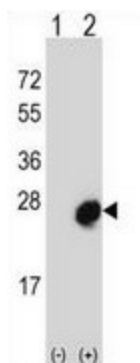


[View online »](#)

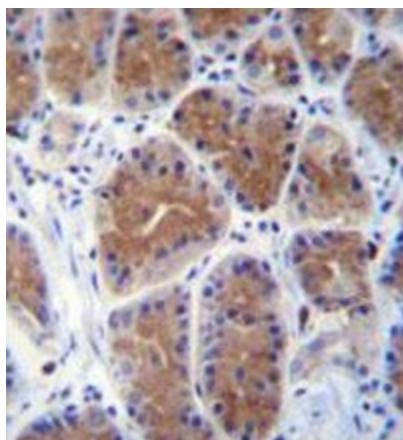
Synonyms: STRAIT11499, MID1IP1, MIG12

Note: **Molecular Weight:** 20202 Da

Product images:



Western blot analysis of Mid1-interacting protein 1 (arrow) using rabbit polyclonal MID1IP1 antibody. (N-term). 293 cell lysates (2 ug/lane) either nontransfected (Lane 1) or transiently transfected (Lane 2) with the MID1IP1 gene.



Immunohistochemistry analysis in human stomach tissue (formalin-fixed, paraffin-embedded) using Mid1-interacting protein 1 antibody. (N-term), followed by peroxidase conjugation of the secondary antibody and DAB staining. This data demonstrates the use of MID1IP1 antibody for IHC. Clinical relevance has not been evaluated.