

Product datasheet for **AP52694PU-N**

MICALL1 (C-term) Rabbit Polyclonal Antibody

Product data:

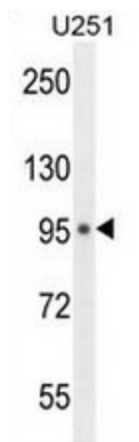
Product Type:	Primary Antibodies
Applications:	IHC, WB
Recommended Dilution:	This antibody is suitable for immunohistochemistry on paraffin sections and Western blotting. The suggested dilution is: Immunohistochemistry on paraffin sections 1/50-1/100. Western blotting: 1/100-1/500.
Reactivity:	Human
Host:	Rabbit
Isotype:	Ig
Clonality:	Polyclonal
Immunogen:	Synthetic peptide - KLH conjugated - corresponding to the C-terminal region (between 759-789aa) of human MICAL-like protein 1.
Specificity:	This antibody detects human MICAL-like protein 1 at C-term.
Formulation:	PBS with 0.09% (W/V) Sodium Azide. State: Aff - Purified State: Liquid purified Ig fraction
Concentration:	lot specific
Purification:	Purified through a protein A column; followed by peptide affinity purification.
Conjugation:	Unconjugated
Storage:	Store the antibody undiluted at 2-8°C for one month or (in aliquots) at -20°C for longer. Avoid repeated freezing and thawing.
Stability:	Shelf life: one year from despatch.
Gene Name:	MICAL like 1
Database Link:	Entrez Gene 85377 Human Q8N3F8
Background:	MICAL-like protein 1/MICALL1 may be a cytoskeletal regulator.
Synonyms:	MICALL1, KIAA1668, MIRAB13



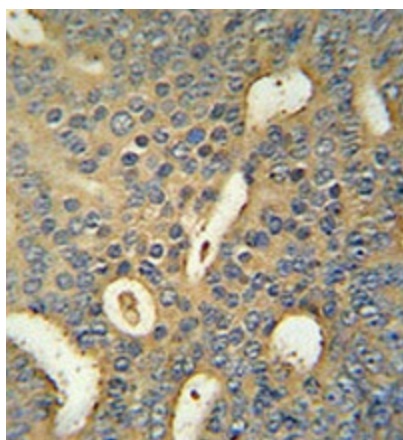
[View online »](#)

Note: **Molecular Weight:** 93441 Da

Product images:



Western blot analysis in U251 cell line lysates (35ug/lane) using MICAL-like protein 1 antibody. This demonstrates the MICAL-like protein 1 antibody detected the MICALL1 protein (arrow).



Immunohistochemistry analysis in human prostate carcinoma (formalin-fixed, paraffin-embedded) using MICAL-like protein 1 antibody. (C-term), followed by peroxidase conjugation of the secondary antibody and DAB staining. This data demonstrates the use of the MICAL-like protein 1 antibody for IHC. Clinical relevance has not been evaluated.