

Product datasheet for **AP52693PU-N**

MICAL2 (N-term) Rabbit Polyclonal Antibody

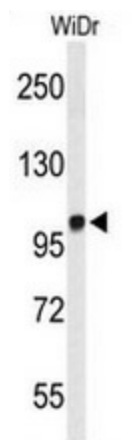
Product data:

Product Type:	Primary Antibodies
Applications:	WB
Recommended Dilution:	This antibody is suitable for Western blotting . The suggested dilution is: 1/1000.
Reactivity:	Human
Host:	Rabbit
Isotype:	Ig
Clonality:	Polyclonal
Immunogen:	Synthetic peptide - KLH conjugated - corresponding to the N-terminal region (between 55-83aa) of human MICAL2.
Specificity:	This antibody detects human MICAL2 at N-term.
Formulation:	PBS with 0.09% (W/V) Sodium Azide. State: Purified State: Liquid purified Ig fraction
Concentration:	lot specific
Purification:	Prepared by Saturated Ammonium Sulfate (SAS) precipitation followed by dialysis against PBS.
Conjugation:	Unconjugated
Storage:	Store the antibody undiluted at 2-8°C for one month or (in aliquots) at -20°C for longer. Avoid repeated freezing and thawing.
Stability:	Shelf life: one year from despatch.
Gene Name:	microtubule associated monooxygenase, calponin and LIM domain containing 2
Database Link:	Entrez Gene 9645 Human O94851
Synonyms:	KIAA0750
Note:	Molecular Weight: 126689 Da



[View online »](#)

Product images:



Western blot analysis of MICAL2 (arrow) in WiDr cell line lysates (35ug/lane) using MICAL2 antibody.